



# The BONNIE GREENSWARD

OUR 99<sup>TH</sup> SEASON

VOL 24-3

## THE LETTER 'A' STANDS FOR

### INTRODUCING THE "A" IN STEAM

Janemarie Mckay is a seasoned expert educator in innovation. In parenthesis, that is STEAM [science, technology, engineering, arts, math]. She was instrumental in establishing the relationship between LedgeRock, First Green and Governor Mifflin school district.

Her influence has reached the national level as a teacher liaison to GCSAA's First Green Task Force Group, helping create lesson plans for the future and expand the program.

After leaving the school district Janemarie took her passion for STEAM to Albright College, then expanded it to Alvernia University. She saw the potential of extending innovation to summer school for highschool students, and also for college age students. At Albright, she promoted expanding teaching to the real world and still sees how much golf courses (and clubs) can be used as a teaching tool.

Starting with a four-week event at LedgeRock encompassing all aspects of a club operation and the different opportunities available in a real world industry, Alvernia University has now partnered with Berkshire Country Club for proximity sake and are planning to expand programming with them.

On June 17, I attended an event at Albright to showcase the First Green, along with GCSAA & PAGCS, to all the local school districts and how they can use golf courses

Continued on page 5

### THE OTHER "A"

Ain't nobody got time for this! Agreed. Nobody listens anyway, so why bother. Agreed. Until you have been part of National Golf Day and the Day of Service, these are valid sentiments.

For the past two years, a few of us representing the PAGCS have headed to our Capitol to muddle through these very things: why? The team/s representing PA, NJ, and DE are full of members representing the CMA, PGA, GAP. Why NOT the people who make golf possible: the professionals who can speak to the science and technology, the artistry that is a golf course.

### IN THIS CASE, A=ADVOCACY

In 2023, a few of us got our first immersion experience into all.the.things:

- Meeting hundreds of advocates from all facets of the industry; realizing how many states send a contingency of superintendents, vendors, chapter executives, turfgrass professionals.
- Navigating the "bowels" of our nation's capital: It is documented on phones and smart watches that this translates to at least 30,000 steps per day—skip the fancy shoes and get used to being searched, removing many things—think TSA on steroids.
- Sharing knowledge, working as a team with others in our cohort,

Continued on page 6

## >> UPCOMING EVENTS

### GOLF CALENDAR

#### PAGCS MEMBER-GUEST

September 30

Lookaway Golf Club

Shotgun: 12:30

#### SUPER-SCRATCH

October 16-17

HVCC and Liberty Hill

#### MET TOURNAMENT

October 21

WVCC

#### PAGCS GOLF CHAMPIONSHIP

October 28

Manufacturers' Golf & Country Club

Shotgun: TBD

#### PRO-SUPERINTENDENT

November 1

Saucon Valley's Old Course

### SOCIAL CALENDAR

#### GCSANJ V. PAGCS ICE HOCKEY GAME AND FAMILY FUN SKATE

December 14

Steel Ice Center, Bethlehem, PA

#### SOCIAL WITH GCSANJ

February 5

The Deck, San Diego

[Visit the website events tab for more!](#)

## #HEADINGTO100 - PAGE 17

As we head to our centennial in 2025, the 100th committee has been hard at work. Please share your history: pagcs1925@gmail.com



## >> OFFICERS

### PRESIDENT

Gregory D'Antonio  
Concord Country Club  
gdantonio@concordclub.org

### VICE PRESIDENT

Patrick Michener  
Bidermann Golf Club  
pmichener@vicmead.com

### TREASURER

Tim Edwards  
Rivercrest Golf Club  
tge@rivercrestgolfclub.com

### SECRETARY

Darren Farrar  
Whitemarsh Valley Country Club  
dfarrar@whitemarshvalleycc.com

### PRESIDENT EMERITUS

Doug Rae  
Applecross Country Club  
doug@applecrosscc.com

## >> BOARD MEMBERS

Joe Agnew, Director  
The Bucks Club  
Jagnew@thebucksclub.com

Brandon Collins  
Overbrook Golf Club  
Bcollins@overbrookgolfclub.com

Nick Lubold  
Sunnybrook Golf Club  
NLubold@sunnybrook.org

Matt Rogers  
Gulph Mills Golf Club  
Mrogers@gulphmillsgc.com

Rich Shilling  
Jeffersonville Golf Club  
Shilling2pa@yahoo.com

### INDUSTRY LIAISON

Bill Corcoran  
Ventrac

Mike Kachurak  
Shreiner Tree Care

### ASSISTANT LIAISON

Nick Sujkowski  
Concord Country Club

### EQUIPMENT MANAGER LIAISON

Mike Smethurst  
Gulph Mills Golf Club  
gr8grnx@msn.com

## >> PAGCS OFFICE

Kristen Liebsch  
Executive Director, Newsletter Editor  
484-467-5298  
kliebsch@pagcs.org

## >> THE PM

### A CALL FOR INPUT

Dear PAGCS Members,

I think I speak for many when I say it was great to see summer come to an end. Football season is underway and fall is here. Many Superintendents I have spoken with over the past few weeks consider this to be one of the toughest years in a long time, some rank it top three in their careers. I am sure most are seeing tired staff who are ready for cooler overnight temperatures. On the Affiliate side, I hope everyone has AC in their truck and the positive support you all bring to tired Superintendents is appreciated and doesn't go unnoticed. Whether it is a case of water or just positive words of encouragement to keep grinding, I speak for all Superintendents in saying thank you.



Our yearly Phamily Phun at the Phillies Game sold in August. Whether it was the first-place team or just the desire to get away for an afternoon, it is great to see so many attending and enjoy an afternoon away from work or the golf course. As we turn the page to fall, we have great golf venues planned and hope outing and aeration schedules permit everyone getting away for a fun day of golf and relaxation. If you are still in the match play, get those matches planned as the year will come to a close quickly!

As we look ahead to the winter, if anyone has any ideas for our annual education event, please reach out to me. Topics must be objective in nature and cannot promote any products. I also want to thank the entire board of the PAGCS for volunteering their time this year, especially our new members who have brought fresh ideas for the future of the Association.

Respectfully,

A handwritten signature in black ink that reads "Cory A. O'Hara". The signature is written in a cursive, slightly slanted style.

President, Philadelphia Association of Golf Course Superintendents



# >> PLEASE SUPPORT THOSE WHO SUPPORT US!

## PLATINUM

---

[Pocono Turf](#)  
[Turf Equipment](#)  
[Plantfood](#)

[Shreiner Tree Care](#)  
[Synatek](#)

## GOLD

---

[Arader Tree Service](#)  
[Genesis](#)  
[Harrell's](#)  
[Lebanon Turf](#)  
[Lawn & Golf](#)

[Aquatrols](#)  
[Ewing Irrigation](#)  
[Fisher & Son](#)  
[Noble Turf](#)

## SILVER

---

[ENVU](#)  
[Mitchell Products](#)  
[Aer-Core](#)  
[BASF](#)  
[John B Ward](#)  
[NuFarm](#)  
[Total Turf Golf Services](#)  
[George E. Ley Company](#)  
[SiteOne](#)

[Target Specialty Products](#)  
[Helena](#)  
[Grass Roots](#)  
[Coombs Sod](#)  
[Nutrien](#)  
[Turf Trade](#)  
[Davisson Golf](#)  
[Syngenta](#)

## BRONZE

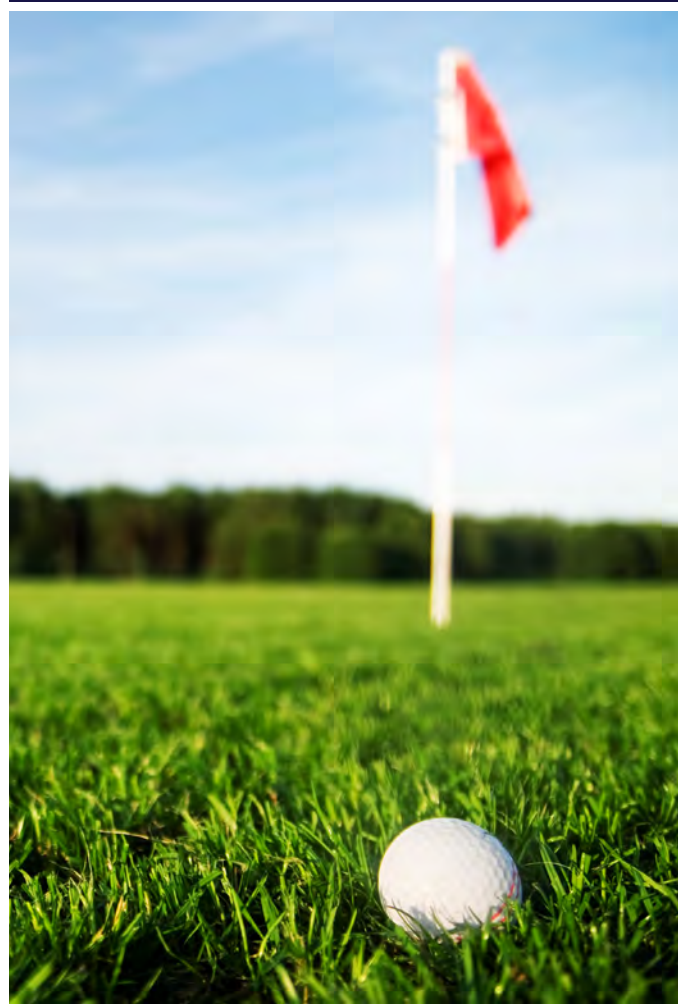
---

[Finch Turf](#)  
[Windview Athletics](#)  
[Double D Turf](#)  
[Dryject](#)  
[East Coast Sod](#)  
[PBI Gordon](#)  
[FMC](#)

[Corteva](#)  
[KM Golf Sales](#)  
[Central Sod](#)  
[First Turf and Ornamental](#)  
[American Golf Grading](#)  
[Sox Erosion](#)

## >> ISSUE GUIDE

FIRST TEE .....	4
FIRST GREEN.....	5-7
ASSISTANT'S CORNER.....	10
UNIVERSITIES .....	11-12
LABOR & CAREER .....	15
HEADING TO 100.....	16
EVENTS .....	22-23
PARTNER/SPONSOR.....	24-25
USGA .....	26
GAP .....	27



## PENNSYLVANIA URBAN NUTRIENT MANAGEMENT – BE GREEN WHILE PROTECTING OUR STREAMS



### CLEAN STREAMS START AT THE FIRST TEE

As we step up to the first tee box and look out over lush fairways and pristine water features, we visualize the hole-in-one that will earn us eternal bragging rights. For many of us, a day at the course is not just about shooting the perfect game, but about enjoying time

with friends on a beautiful, green backdrop of well-manicured fairways and putting greens.

For the 600-plus golf courses in Pennsylvania, selecting and implementing an appropriate turfgrass management program to promote eye-catching fairways and smooth, reliable greens is not only essential to golf course success, but is also important to protecting our waterways.

### TAKE THE RIGHT APPROACH

Pennsylvania's 2022 Fertilizer Law amendments were developed to save Pennsylvania waterways and the waterways downstream. As a bonus, following the limitations in the law will boost your bottom line by ensuring that your investment doesn't wash away. The 2022 law established the following nitrogen and phosphorus limits for turf fertilizer applications.

- Nitrogen is limited to 0.9 pounds of total nitrogen and 0.7 pounds of available nitrogen per 1000 ft<sup>2</sup> per application.
- No phosphorus can be applied unless establishing or repairing turf.
- Nitrogen and phosphorus rates can be adjusted based on soil test recommendations and/or if using an enhanced-efficiency fertilizer.

In addition to the nutrient limitations, the law also established application parameters to prevent direct movement of fertilizer nutrients into our streams:

- Do not apply fertilizer if a heavy rain event is expected.

- Keep fertilizer away from drainage ditches, storm drains, or water.
  - Maintain a 15-foot buffer from the banks of all waterways.
- Remove fertilizer that lands on impervious surfaces (driveways, sidewalks, roads, parking lots).
- Do not use as a snow or ice melt.
- Do not spread fertilizer on snow-covered or frozen ground.
- Limit fertilizer application between December 15 and March 1 to 0.50 lbs of total nitrogen per 1000 ft<sup>2</sup> per application.

### KNOW WHAT'S BEST, SOIL TEST

Selecting the right fertilizer requires an understanding of what your turf really needs to be lush, healthy, and green. It is important to conduct regular soil tests to determine nutrient deficiencies that should guide fertilizer selection and application. Soil test kits can be purchased for a nominal fee from your local [Penn State Extension office](#).

Following soil test recommendations, following fertilizer label instructions, and using a properly calibrated spreader will ensure the right amount of nitrogen, phosphorus, and potassium are applied, while reducing nutrient loss and fertilizer cost.

### IT'S PAR FOR THE COURSE

What works at the golf course also works at home. Just remember that homeowners must also play by the same rules as the groundkeepers. Whether it is a golf green, sports field, or home lawn, everyone who applies turf fertilizer is now required to follow the same established nutrient and environmental restrictions.

### WORKING TOGETHER FOR CLEAN WATER

With more than two million acres of managed turf in Pennsylvania, controlling what goes into PA waterways is ALL of our responsibility. Help protect Pennsylvania's waterways by being wise when you fertilize!

For more information on the Pennsylvania Fertilizer Law, visit the Department of Agriculture's website at [agriculture.pa.gov/fertilizer](http://agriculture.pa.gov/fertilizer) or contact Denise Uzupis at [duzupis@pa.gov](mailto:duzupis@pa.gov).

Continued from front cover

## INTRODUCING THE "A" IN STEAM



*Alan Fitzgerald, right, with Ryan Kraushofer, CGCS at Westminster National in Maryland and one of the original First Green Liaisons, during the First Green event at Langston, held in tandem with the Day of Service during National Golf Week events.*

in their STEAM lesson plans. Leann Cooper, GCSAA's Director of First Green and Workforce Development, joined us via video link. Together, we spent 90 minutes providing all the key information.

Attendees were fascinated with how much a First Green event can offer, how it shows students to apply their STEAM education in real world settings and career paths. I have already spoken with a few of the teachers about hosting their own First Green Events – I'm looking forward to expanding the program, not just in PA but also at Rehoboth Beach Country Club this fall.

**Alan Fitzgerald is CGCS at Rehoboth Beach Country Club, formerly GCS at Ledgerock Golf Club; and the regional First Green Liaison: he can be reached at**

[superintendent@rehobothbeachcc.com](mailto:superintendent@rehobothbeachcc.com)

### Upcoming First Green Events

- **Monday, October 7: Berkshire Country Club Reading**
- **Monday, October 14: Kennett Square Golf and Country Club**
- **Tuesday, October 22: Ledgerock Golf Club**

Continued from front cover

## THE OTHER "A"

dividing and conquering with a plan of who speaks to what issue, learning the issues at hand and how to speak to them, realizing you are making a difference.

The experience lends itself to drawing you in and wanting to encourage more to participate—this is a CULTivar of professionals who radiate passion, experience, and knowledge.

Returning in 2024, the PAGCS added a new advocate to the PA team—the daughter of an industry pro! The main issues at hand:

- Health: advocating for passage of the PHIT bill [HR1582, S786]
- Tax Bill: remove golf from the IRS "sin" list
- 2024 Farm Bill: keep golf, add resources

### TRAINING. TEAMWORK. EDUCATION.

No one is left alone to flounder: One of the requirements is to attend the training session the afternoon before. This is when participants meet others from the state team and are informed of the advocacy initiatives, how to address them, and how to do it. The state teams then have time to collaborate and choose who will speak to which initiative.

We visit the offices of every Representative and Senator in our state. Again, choose your attire accordingly for the labyrinths that are the Capital buildings. We gain courage meeting after meeting and year over year.

**Can we please get a few more agronomy professionals on the team!?**

"DESPITE DECADES IN THIS INDUSTRY, ENDING UP THE ONLY ONE ON THE PA TEAM AVAILABLE TO SPEAK ABOUT AGRONOMY AND 2024 FARM BILL ON BEHALF OF THE STATE OF PA FELT SURREAL. AT LEAST THIS WAS NOT MY FIRST CAPITOL HILL VISIT."

-KEL

"IT CAN FEEL INTIMIDATING AND OVERWHELMING IN THE BEGINNING, BUT ONCE YOU FIND YOUR VOICE, IT STARTS TO COME NATURAL. UNTIL: THE PA TEAM HAD TO DIVIDE AND CONQUER SO THAT THE OFFICES OF KEY LEGISLATORS FROM DE AND NJ WERE COVERED."

### DAY OF SERVICE

New in 2024, volunteers were given a choice of the historied day of service on the Capital Mall or head out to Langston [NLT] to introduce First Green STEAM education to the local community. Some of us chose First Green and others the Mall.

### CALL TO ACTION

No one in the golf turf industry is bored in May, and ain't none of us got time for this. But if we don't do this, we lose: as the sayings go, if we don't have a seat at the table, we are on the menu; if we don't speak, someone else speaks for us. Worse that can happen, you get to see the Capital with credentials, learn new things, network with colleagues from across the country, and other amenities.

May 2025 will be here before we know it: <https://www.gcsaa.org/advocacy/get-involved/national-golf-day>





This past May, I had the privilege of attending National Golf Day with my daughter, Nora, and it was an unforgettable experience! It was a unique opportunity for us to bond over a shared interest while learning about the broader impact of golf on our communities. We had the chance to engage in meaningful conversations with members of Congress, advocating for the vast contributions the golf industry offers to the well-being of our communities and the economy. Later, we joined others in a community service event, planting trees at the George Mason Memorial. The event culminated in a reception that brought together industry members and leaders, all equally enthusiastic about supporting the future of golf. Sharing this experience with Nora made it all the more special, and I look forward to National Golf Day 2025!

—Michael Janzer & Nora Janzer





## The Best Conditions Require The Best Partners

Your Exclusive Rain Bird® Golf Supplier



### Your Ewing Golf Go-To Guys

**Rick Shriver**  
Mid-Atlantic Regional Golf Sales Manager  
rshriver@ewingos.com  
240-243-8516

**Brian Kealy**  
Northeast Golf Account Manager  
bkealy@ewingos.com  
856-410-7840

**Matt Schifano**  
Northeast Golf Account Manager  
mschifano@ewingos.com  
570-430-0359

**Brian Reardon**  
Northeast Golf Service  
breardon@ewingos.com  
717-371-8667



Scan the QR code to download our Golf Catalog

EwingOutdoorSupply.com

LEAN ON US

## YOU MAKE THE LIST, WE'LL CHECK THE BOXES.

- divot mix
- fertilizer
- seed
- arbor solutions
- erosion control
- mulch + compost
- disease control
- bunker sand
- soil testing
- tools + accessories
- topdressing
- aquatic solutions



### JUST ASK A GENESIS TEAM MEMBER

**Ben Brace**  
570.472.1248 \ bbrace@genesisgreensupply.com

**Tom Currie**  
484.844.5214 \ tc@genesisgreensupply.com

**Tom Defino**  
302.354.2840 \ tom@d@genesisgreensupply.com

WWW.GENESISGREENSUPPLY.COM | 717-759-8151

Follow Us: [tweet/@genesisturf](https://twitter.com/genesisturf)  
[fb/genesisgreensupply](https://www.facebook.com/genesisgreensupply) [insta/@genesisturfgrass](https://www.instagram.com/genesisturfgrass)

**"SERVING THE TURFGRASS PROFESSIONAL SINCE 1978"**



**WE PRIDE OURSELVES IN**

- CUSTOMER SERVICE
- TECHNICAL SUPPORT
- QUALITY PRODUCTS



**GRASS ROOTS TURF PRODUCTS**

4 Middlebury Boulevard, Suite 7  
Randolph, NJ, 07869

**973-252-6634 • sales@griturf.com**

**www.griturf.com**

**THE MOST ADVANCED  
TURF MANAGEMENT  
PROGRAM IN THE  
MARKET**



The forces impacting your grounds' health are interconnected, which is why each Rx360 product is designed to work hand-in hand with others to provide more valuable data than any one product can on its own. When combined with expert advice from your Helena representative, Rx360 is designed to maximize profits by helping you make more efficient, fact-based decisions throughout the season, with a payoff of reaching your goals and producing a higher return on your investment.

Contact your  
Local Helena  
Representative  
Today

Conor Geisel  
Phila Area  
609-980-9355  
GeiselC@HelenaAgri.com

Marc Prosser  
Wilmington Area  
570-449-9926  
ProsserM@HelenaAgri.com

**ACCUPOINT®**

- » Nutrient Sampling
- » Site Monitoring
- » Record Management

**PREVEAL®**

- » Precision Imagery to Identify Site Variance
- » Targeted Tissue Sampling
- » Custom Management Recommendations

**EXTRACTOR®**

- » Strong Principle Based Tissue Recommendation
- » Recommendations Created and Supported Using Local Expert Knowledge
- » Quality Lab Processing

**AQUALENZ®**

- » ADVANCED WATER ANALYSIS
- » Precision Water Sampling
- » Quality Sample Processing
- » Custom Recommendation Built Around Your Source to Maximize Potential and Efficacy



Rx360, Preveal, Accupoint, Extractor, Aqualenz & Preval Products, Knowledge, are registered trademarks of Helena Holding Company. Always read and follow directions. © 2021 Helena Holding Company.



**KMGOLFSALES PROUDLY REPRESENTING  
CUTTER & BUCK/CLIQUE APPAREL  
AND AHEAD HEADWEAR**



**KEVIN MCCLELLAN**

**215-519-0837 • KMGOLFSALES@OUTLOOK.COM**

**A NEW MODE OF ACTION ONLY  
HAPPENS ONCE IN A BLUE MOON.**

An entirely new mode of action for the control of pythium diseases. **Believe it.**



Always read and follow all label directions, precautions, and restrictions for use. Some products may not be registered for sale or use in all states. FMC, the FMC logo, and Serata are trademarks of FMC Corporation or an affiliate.

**ONE SYSTEM.  
ENDLESS  
POSSIBILITIES**



Makita's purpose-built motors, battery technology, and enhanced communications work together to deliver unmatched power, speed, and run time. Get maximum performance and efficiency with LXT Products.



## A TRICKY SUMMER FOR LONG TERM PROJECTS

by Nick Sujkowski, PAGCS Assistant Representative to the Board

I recently visited with the team at Chester Valley Golf Club to check out all the projects they had in store. Not only are they maintaining pristine playing conditions on 18 holes through a brutal Philadelphia summer, but doing so with a new irrigation system going in and a short course to follow.

The team at CVGC is doing a fantastic job keeping up with a busy golf schedule while simultaneously installing new irrigation around an existing system, which is no small task. Main lines for the new system went in earlier this spring and they have now moved to pulling the remaining lines down the fairway.

Closing one hole at a time, the team with Landscapes Unlimited is able to complete a hole at a time in about two or three days before turning it back over to the CVGC team. This includes pulling or trenching all new pipe and wire, removing and replacing sod where needed and removing all old irrigation heads. Working around an existing irrigation system can be a challenge especially given the tough summer we have had in the Philadelphia region. The team at CVGC is making it look easy, however, with some help from Brian Kealy and the team at Ewing Irrigation.

The new irrigation project should be completed around December 2024 at which point the course will be turned back over to the members. Irrigation is never an easy sell but I'm sure the members will be thrilled to see this project completed with such precision.

The new irrigation system finishes just in time for the new Short Course to begin. Slated to begin in early September, Landscapes Unlimited will move over to an eight acre portion of the property to begin a six hole short course. The short course includes six USGA greens and three teeing areas designed by Jim Nagle of Nagle Design Works, LLC. This new short course will be an exciting addition to the club but will also be an added challenge to the Chester Valley agronomy team as they will now have more to manage; a challenge I am sure they are well-equipped for.

The team at Chester Valley Golf Club is doing an outstanding job managing so much on their plate this summer and it would not be made possible without their talented team of turf professionals including: Derek Mohler (Golf Course Superintendent), James Bromwell (Lead Assistant Superintendent), Michael Dudas (Assistant Superintendent), Jack Whitney (Assistant Superintendent), Nick Mattia (Assistant-In-Training), and Jay Clymer (Intern).



From left to right: Nick Mattia, Jay Clymer, Declan Coates, Jack Whitney, James Bromwell, Mike Dudas Front row: Ellie Bromwell

## ASSISTANT'S CORNER

Got any cool projects or stories to share in 2024? We want to hear from you!  
Contact Nick: [nicksuj@gmail.com](mailto:nicksuj@gmail.com)

## LESSONS FROM THE FIELD



In an effort to immerse students in golf course agronomy and real time maintenance, Dr. Linde, arranges field trips to visit superintendents at their courses throughout the academic year. One such example is a morning spent with PAGCS Board Member Joe Agnew, GCS at The Bucks Club.

The goal for this trip, along with one that took place a week later [more on that in

the next issue], was to compare agronomic practices across a public versus a private facility.

Some Key Areas of Exploration:

- Witnessing live the ins and outs of a GPS sprayer AND learning the savvy navigating and negotiations to acquire it within budget
- Highlighting the different agronomic practices, in particular aeration, mow heights, moisture levels, employed at a public facility, based on the end user—knowing your customer
- Identifying different grasses across mixed settings; learn the different playing surfaces and important golf course features
- Bonus: watching a crew contracted from Total Turf Golf Services'

Pennink Arrimour division build a retaining wall on the course

- Tour the maintenance facility to understand basic layout: equipment maintenance and repair, inventory of machinery and chemicals/ fertilizers, etc.

Check back next issue for more on this and the visit to a private facility.



### TESTAMENT TO THE TRIPS

## ELEVATE THE EXPERIENCE

from the tee to the green

**Specialized Turfgrass Services**

- Top Dressing
- Sandmaster Drainage
- Drill & Fill
- Deep Tine (Solid & Coring)
- Traditional Shallow Coring
- Fairway Aeration with Clean-Up

Office: 610-327-3390  
1486 S. Hanover St. • Pottstown, PA 19465  
www.aer-core.com

**Bill Mast**  
Cell: 610-608-8319  
bmast@aer-core.com

**Steve Thompson**  
Cell: 610-972-5933  
sthompson@aer-core.com

**TOTAL TURF GOLF SERVICES**

INTEGRITY . QUALITY . SAFETY . CARE

*Helping to make golf better in Philadelphia since '93!"*

**7th Hole**  
**Aronimink Golf Club**  
**Master Plan Restoration Completed May 2018**  
**Hanse Golf Design**

## THE DELVAL DIFFERENCE—STUDENTS EXPERIENCE MULTIPLE TURF MANAGEMENT CULTURES



Field trips are one of my most important teaching methods to use in My DelVal Turf classes. I take five or six trips per semester. The students and I both love getting away from the screens and meeting Turf professionals and seeing the areas they manage and the equipment they use.

The second Turf class called **Turf Cultural Systems** is always offered in the spring semester and I like to contrast public golf course maintenance with private golf course maintenance. This past spring, we went to The Bucks Club, run by Joe Agnew, and Philadelphia Cricket Club, run by Dan Meersman to compare private and public course maintenance.

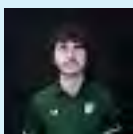
Simply touring the maintenance facility and walking across a golf hole, students can see the difference between courses. I eventually asked the students to reflect on what type of golf course they would want to run as a superintendent.

Besides getting a tour on these trips, I like to arrange with the superintendent to do some equipment demonstrations. This year at the Bucks Club, Joe Agnew demonstrated on how to use his GPS sprayer. I also brought my stimp meters and had the students learn how to use one. At PCC, Rob Moulds showed us how the crew uses their robotic mowers, and one of his interns demonstrated the USGA golf ball.

One of the last things I ask on all our field trips is for the superintendent to speak about work opportunities and then also give the class advice on how to advance themselves in a career on a golf course. During our next scheduled lecture class, I have the students reflect on the field trip and ask them if they were surprised about something they heard or if they needed more information. Today's college student needs inspiration much more than information and field trips and their hosts are giving that inspiration.

### PRIVATE PERSPECTIVE

*Immediately pulling up to Philly Cricket Club was ... exciting because the quality of the grounds and things around were more manicured than the Bucks Club. This is to be expected: the trip to Cricket was engaging – being shown what goes into keeping a high-quality golf course ... we got to see how the rough around all of Cricket's three courses are mown with new robot mowers that have charging stations all around the property. You can tell the difference in budgets and attention to detail at a private club because their golf course can be maintained with higher-quality equipment, materials, and money to sustain all of these expensive parts of the golf course industry.*



**Lucas Baldinger, DelVal Turf Student—Class of 2025**

Lucas can be reached at [lucasbaldinger10@gmail.com](mailto:lucasbaldinger10@gmail.com)



**TURF  
EQUIPMENT**  
AND SUPPLY COMPANY



# GOLF COURSE SOLUTIONS WITH LOCAL SUPPORT

Count on Ventrac and Turf Equipment and Supply Company for innovative products, services, and local support to keep your golf course operation running smoothly.

**TURF EQUIPMENT AND SUPPLY**

[www.turf-equipment.com](http://www.turf-equipment.com)

800-827-3711

**UPGRADE**  
YOUR NUTRITION



**ELE-MAX**<sup>®</sup>  
Phosphite MAX 0-0-30



Conor Geisel  
Sales Representative  
609-980-9355

Important: Always read and follow label instructions. Some products may not be registered for sale or use in all states and countries. Please check with your Helena representative to ensure registration status. Helena and Ele-Max are registered trademarks of Helena Holding Company. © 2023 Helena Holding Company. HPG0421P



**NEXT BONNIE  
NEWSLETTER DEADLINE  
OCTOBER 15, 2024**

**Lawn and Golf**  **supply co. inc.**  
*More Than the Logo!*  
Since 1937.

Equip. Sales: Tony Gustaitis CGCS 484-614-0999  
Service: John Kocon 610.933.5801 x 144  
Parts: Tony Mastrangelo 610.933.5801 x 2

[www.lawn-golf.com](http://www.lawn-golf.com)



**Electric 360 Greens Mower**  
- No hydraulics  
- Programmable Dynamic FOC  
- Swing out center unit



**Smithco**  
XL 7000  
Greens  
Roller

Mid Atlantic Exclusive Dealer



**Super 600 Sweeper**  
- Fraise & Flail Mower  
- Verticutter Collection  
- Floating Head follows contours



**Smithco**  
Electric  
Bunker  
Rake

Another segment in the Association's efforts to address much needed career and labor resources for our members.

## CHECK OUT THIS PODCAST FEATURING PAGCS VICE PRESIDENT

"Powerful Ways to Set Yourself Apart as a Superintendent with Patrick Michener"

What sets good superintendents apart from great ones is their business ability. The most successful superintendents bring a higher-level thought process to their leaders, club members, and team. Patrick Michener shares how you can become that irreplaceable leader.

[CLICK HERE](#)



**GOLF SAFETY**  
A RISK COMPLIANCE COMPANY

**Tony Gustaitis, CGCS**

Toll Free: (800) 965-8414 • MOBILE: 484-614-0999  
Tonygus@comcast.net • www.GolfSafety.com  
9006 Trolley Lane, Eagleville, PA 19403

 @GOLFCOURSESAFETY  @GOLF\_SAFETY

**BUILDING A SAFER WORKPLACE FOR THE GOLF INDUSTRY**



**Providing Services & Solutions to the  
Golf & Sports Turf Industries**



**SERVICES**

Fraze Mowing	Deep Tine Aeration
Sandmaster Drainage	Debris Management
Field Renovation	Slit Seeding
Fertilizing	Spraying
Solid Tine & Core Aeration	Topdressing
Verticutting	Infield Preparation

**CONNECT WITH US:**

 Windview Athletic Fields  
 @Windviewinc

[www.windviewathleticfields.com](http://www.windviewathleticfields.com) | [chris@windviewathleticfields.com](mailto:chris@windviewathleticfields.com) | 610-608-3175  
1325 Goshen Parkway | West Chester, Pa 19380



**Firm and Fast.  
We Can Help With That.**



**AERATION SERVICES  
EQUIPMENT RENTALS  
PRODUCT SALES**

**DoubleDTurf.com**



**First Turf  
& Ornamental**

[www.ftodistributors.com](http://www.ftodistributors.com)

**J.T. Latshaw**  
Sales Representative PA, NJ, DE

3349 Monroe Avenue, Suite 290, Rochester, NY 14618  
614-499-2311 | [JT@ftodistributors.com](mailto:JT@ftodistributors.com)

**Aerate and Amend Without Cores**  
18 Greens per Day, Ready for Quality Rounds the Next Day



**DryJect.com • 800-270-8873**



 Search DryJect  DryJect Technologies  @DryJect

*Aerate, amend,  
play next day*

**AMERICAN GOLF GRADING**

At AGG, we offer precision grading at an affordable price. We specialize in precision laser grading for golf courses, athletic fields and any other area where precision is desired.

**856-905-3044**  
[glen@littlemill.com](mailto:glen@littlemill.com)



<https://www.linkedin.com/in/glen-van-istendal-0b03411b/>

THE YEAR WAS 1963 WHEN I JOINED  
THE PAGCS. PAUL WELLS SR. AND  
EB STEININGER ARE TWO MEMBERS  
THAT GREETED ME.

I MET MANY OLDTIMERS BACK THEN.  
NOW ON AUG. 3<sup>RD</sup> I WILL BE

92 YEARS OLD. I GUESS THAT  
MAKES ME AN "OLDTIMER"

I ENJOYED MY CAREER AS A  
GOLF COURSE SUPERINTENDENT.  
MET MANY GREAT PEOPLE  
ALONG THE WAY

I THANK THE LORD - FOR ALL HE  
HAS DONE FOR ME.

JOHN A. SEQUI



Always read and follow label directions.  
Alucion is a trademark of BASF.

**ADD TOTAL  
KNOCKOUT  
TO YOUR TOOLBOX**

**Alucion™ 35 WG**  
Insecticide

A broad spectrum, non-restricted use solution for hard-to-control surface feeders from chinch bugs and cutworms to annual bluegrass weevils and nuisance ants.

**BASF**  
We create chemistry

For more information, visit  
[betterturf.basf.us/products/alucion.html](http://betterturf.basf.us/products/alucion.html)



**UPDATED NAME AND LOGO,  
BUT THE SAME GREAT SERVICE!**



**Your go-to supplier for fertilizer,  
biological, and sand products.**

**Turfmanbrad@gmail.com • 410-236-2069**



**LebanonTurf**

**LEARN MORE AT [LEBANONTURF.COM](http://LEBANONTURF.COM)  
OR CALL 1-800-233-0628**

**COUNTRY CLUB GREENS  
GRADE PRODUCTS DELIVER**

**SUPERIOR SEASON-LONG  
PUTTING GREEN  
PERFORMANCE**

No matter what putting green maintenance goals are in place, Country Club has products dedicated to fit every agronomic situation. All are designed specifically for use on putting greens, and have been developed to provide superior turf quality and golf course playability.



**Country Club<sup>IV</sup>**      **Country Club<sup>MD</sup>**      **Country Club<sup>Natural</sup>**

# SAVINGS THAT STACK UP

Multipaks offer complementary products in one convenient package.

Save up to 16% by purchasing select Syngenta products in a Multipak. These Multipaks provide leading solutions for optimal turf quality.

Select from	Available	Supported by
6 solutions	365 days a year	50 agronomic programs



Learn more at [GreenCastOnline.com/TurfMultipaks](http://GreenCastOnline.com/TurfMultipaks)

**syngenta**

Facebook, Twitter, YouTube icons | @SyngentaTurf #Time4Multipaks

©2021 Syngenta. Important: Always read and follow label instructions. Some products may not be registered for sale or use in all states or countries and/or may have state-specific use requirements. Please check with your local extension service to ensure registration and proper use. Divanem is a Restricted Use Pesticide. Action™, Appour™, Banner Maxx™, Decolif™, Divanem™, GreenQuest™, Heritage™, Pliant Maxx™, Terrain™, Veltax™, the Alliance Frame, the Purpose Icon and the Syngenta logo are trademarks of a Syngenta Group Company. All other trademarks are the property of their respective owners.

# RESULTS WORTH THE SWITCH

**Anuew™**

**3 REASONS ANUEW™ PGR PERFORMS BETTER ON BENTGRASS**  
- TRIAL PERFORMANCE VS THE COMPETITION -

Long-lasting and more active at lower application rates

Only late-stage inhibitor to evenly regulate Poa in mixed stands

Fast improvement of turfgrass density and appearance

**/ SEE RESULTS AT [NUFARM.COM/USTURF](http://NUFARM.COM/USTURF)**

ASK YOUR REP HOW ANUEW PERFORMS BETTER ON RYEGRASS, POA AND BERMUDAGRASS, TOO.



©2020 Nufarm. Anuew™ is a trademark of Nufarm.

**Nufarm**  
Grow a better tomorrow



*Connect With Us!*

*Brian Gjelsvik*  
(973) 670-7139  
[briang@nobleturf.com](mailto:briang@nobleturf.com)

*Michael Linkewich*  
(267) 688-8900  
[link@nobleturf.com](mailto:link@nobleturf.com)

*Stephen J. Rudich*  
(610) 349-9519  
[steve@nobleturf.com](mailto:steve@nobleturf.com)

*Bill Cimochofski*  
(609) 923-4045  
[billc@nobleturf.com](mailto:billc@nobleturf.com)



# Pocono Turf – What You Need, When You Need It!

**Chris Friel**  
**215-429-8084**

---

**Chris Zelley**  
**732-580-2683**

**Matt Paulina**  
**610-883-6108**

---

**Scott May**  
**215-307-7712**

**Office**  
**215-582-5545**

**[www.poconoturf.com](http://www.poconoturf.com)**



# NEXT BONNIE NEWSLETTER DEADLINE OCTOBER 15

## PLEASE SUBMIT CONTENT TO: [KLIEBSCHE@PAGCS.ORG](mailto:KLIEBSCHE@PAGCS.ORG)

*Don't just follow contours. Own them.*



**JOHN DEERE**  
**FINCH TURF**

[www.finchinc.com](http://www.finchinc.com)

[@finchturf](https://twitter.com/finchturf)

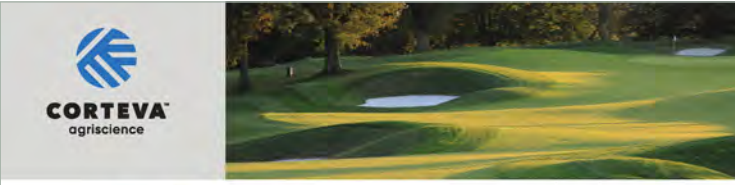
2700/2750 PrecisionCut™ E-Cut™ Triplex Mowers



**East Coast**  
**S O D & S E E D**

**KEVIN DRISCOLL**

C: 609-760-4099 • O: 856-769-9555  
F: 609-561-5384  
KDriscoll@EastCoastSod.com  
596 Pointers Auburn Rd, Pilesgrove, NJ 08098  
[EastCoastSod.com](http://EastCoastSod.com)




**CORTEVA**  
agriscience

**Keep ABW off your course.**  
Superior control. Zero disruptions.

**MatchPoint**  
INSECTICIDE

[LEARN MORE](#)



Nic Mitchell  
[nic.mitchell@corveva.com](mailto:nic.mitchell@corveva.com)  
267.220.0626



**pbi / GORDON**  
**CORPORATION**

Employee-Owned

► For more information contact  
John Wiblishauser at 609.774.3310.

[PBIGordonTurf.com](http://PBIGordonTurf.com)

# From **START** to **FINISH**

Pre-emergent fertilizer with Mesotrione for  
**ESTABLISHMENT** and **MAINTENANCE**



**ProScape 21-22-4 Starter Fertilizer with  
.08% Mesotrione**



**ProScape 20-0-4 100% PCSCU SOP  
8% Ca with .08% Mesotrione**

## **ProScape**<sup>®</sup>

LebanonTurf now offers two unique fertilizer combination products featuring Mesotrione herbicide. Our ProScape 21-22-4 Starter Fertilizer is ideal for turf establishment since it doesn't stop the grass seed from germinating, and **our brand new, exclusive, ProScape 20-0-4 Fertilizer** with no phosphorus for general weed management practices to control more than 46 grassy and broadleaf weeds. Control weeds from the start and maintain superior, weed-free turf for the perfect finish...**available only from LebanonTurf.** For more information, visit [LebanonTurf.com](http://LebanonTurf.com) or call **1-800-233-0628**.

**Rooted in Tradition, Growing through Innovation™**



Scan here to  
learn more



## SCHOLARSHIP

First up, thank you to Alex Lennertz and Sandy Run Country Club for hosting this event the past four years. Your support has enabled the PAGCS to further build and expand the scholarship program.

This event was made possible in partnership with the following:  
Pocono Turf  
along with

Aquatrols  
Noble Turf  
Ewing Irrigation  
Harrells  
Finch Turf  
Grass Roots  
Lebanon

And PAGCS Scholarship  
founders:  
George E. Ley Company/  
Eastern Irrigation



## SCHOL SHOW UP



The Show-Ups! We all lost the bet that these two would actually show up the day after the final round of the US Women's Open—Nate Schell and Matt Wolfe flanked by two of their most adoring fans.



# PAGCS PHAMILY PHUN AT THE PHILLIES

It might have been a real feel of 96 degrees hot on August 28, but the Phillies were not. No matter, the PAGCS knows how to have fun in the face of obstacles. Thank you to all who showed up despite the heat and logistics. It is always a highlight of the yearly calendar no matter what happens. Bring on Red October!

This event was made possible by these partners

Turf Trade  
Shreiner Tree Care  
Plantfood



**Eastern Shorelines** is humbly ecstatic to join the PAGCS and provide erosion control solutions on golf courses across the greater Philadelphia area.

A team with local roots and decades of combined construction and erosion control experience, Eastern Shorelines is proud to support the Golf Course Superintendents and turfgrass management professionals of the region.

Our focus is on innovative erosion control systems and techniques that support the natural functionality of the landscape and provide long-lasting solutions.

We look forward to making a positive impact and contributing to the continued long-term success of the PAGCS!

**Tom Monzo**  
**Eastern Shorelines LLC**  
[Easternshorelines.com](http://Easternshorelines.com)  
610-331-2411



**EASTERN**  
**SHORELINES LLC**

**Pond / Stream / Lake**  
**Shoreline Erosion**  
**Restoration**

**610-331-2411**  
[tom@easternshorelines.com](mailto:tom@easternshorelines.com)

The advertisement features a background image of a golf course with a pond and stream. The text is overlaid on this image, with the company name and contact information in bold yellow and black fonts.

**NEXT BONNIE NEWSLETTER DEADLINE**  
**OCTOBER 15**

**PLEASE SUBMIT CONTENT TO: [KLIEBSCH@PAGCS.ORG](mailto:KLIEBSCH@PAGCS.ORG)**

## BEECH LEAF DISEASE—START PLANNING NOW

Beech Leaf Disease (BLD) is emerging as the biggest threat to our trees since Emerald Ash Borer. BLD is a relatively new disease of native and European beech trees. It was first described in Ohio in 2012. Since then, it has moved north and east, and was found in all counties in southeastern Pennsylvania in 2022. John B. Ward Arborists confirmed our own findings earlier this spring in Penn Valley.

It appears to be caused by a nematode (roundworm) that lives in the leaf buds and leaves, causing leaf banding, leaf and bud death and eventual death of the host tree. The disease affects all species of beech and is capable of killing a mature tree in 6-10 years.

There are treatment options to help manage Beech Leaf Disease. Right now, we are encouraging our clients to reach out to us to make an appointment for us to inventory your beech trees and discuss what option is the most pragmatic.

Our outlook on the Beech Leaf Disease is that this could potentially be a repeat of what we experienced with the ash trees—where only specimens or small groups of trees could be candidates for preservation.

It is extremely important to remember that we are still early in

the research for treatment options. Six months into the future could hopefully yield more promising options. All we can do is be proactive with what treatment options we presently have available.

We are hopeful that this will not turn out to be another episode of the Emerald Ash Borer. Stay tuned for more updates as they come available.

*This article was written by PAGCS member John Verbrugge, Certified Arborist and Delaware Valley University alumnus with John B. Ward & Co. Arborists*

*Founded in 1957, John B. Ward & Co. Arborists is a family owned and operated TCIA Accredited tree care company located in King of Prussia. We are proud to support the PAGCS members with our industry expertise.*

**JOHN B. WARD & CO.**  
EST. 1957  
ARBORISTS  
Bryn Mawr, PA  
CARING FOR THE MAIN LINE'S CANOPY SINCE 1957

**WOODY'S**  
King of Prussia, Pa  
RECYCLING, INC.

*Fast Play Every Season*  
WITH WOODY'S  
**REMOVE & RECYCLE SERVICES**

- LARGE BRUSH PILE AND DEBRIS REMOVAL
- ONSITE GRINDING AVAILABLE
- NO JOB TOO BIG - LARGE CONTAINER TRUCKS AVAILABLE

**Premium Wholesale MULCH DELIVERIES**

- DELIVERIES TO COUNTRY CLUBS AND COURSES
- 65 YARD / TRACTOR TRAILER LOADS AVAILABLE

Call us **610-337-1863**  
woodysrecycling.com  
**LOCAL PICKUPS & DELIVERIES**  
Open Monday-Saturday, 7am - 5pm  
453 CROOKED LANE | KING OF PRUSSIA, PA

- LARGE TREE PRUNING
- ORNAMENTAL PRUNING
- INSECT & DISEASE CONTROL
- TREE REMOVAL
- FERTILIZATION
- PLANT HEALTH CARE

Contact Us **610.525.1562**  
www.johnward.com

PO BOX 280, BRYN MAWR, PA 19010



## ACCURATE IDENTIFICATION ALLOWS FOR AN EFFECTIVE RESPONSE

July 19, 2024 | By Brian Gietka, agronomist, East Region



*Turfgrass diagnostic labs have the equipment and expertise needed to quickly figure out what disease you're dealing with, so you can address the problem as soon as possible.*

Many areas of the Northeast have seen higher-than-normal temperatures over the past several weeks. During July and August, it's common to experience weeks of stressful weather, but this year the high temperatures settled in early. High humidity and isolated severe storms were also an issue. High temperatures, high humidity and heavy rainfall is not a good recipe for turf health. Recently in

my travels, a plethora of diseases and maladies have been observed including anthracnose, brown patch, dollar spot, Pythium, leaf spot and more. Not all fungicides give complete control, even if the disease is on the label, so multiple applications and rotating chemistries may be necessary along with prioritizing plant health over optimal playability. An excellent resource to navigate the efficacy of fungicides on different diseases is "[Chemical Control of Turfgrass Diseases 2024.](#)"

If you're not sure which pathogen or pathogens are causing an issue, a turfgrass diagnostic lab can help. Each lab has recommendations on how to take, package and send samples, so be sure to follow instructions prior to collecting the sample. For the best chance of an accurate pest identification, take samples before making plant protectant applications. The technicians in the lab likely won't know anything about

your golf course, so help them with diagnosis by including information about recent cultural practices, environmental conditions, location of sample and any other information associated with the problem. Photographs and other clues that can point lab techs in the right direction are also helpful. There are many turfgrass diagnostic labs throughout the Northeast and across the country. For a listing of university-based plant diagnostic labs in the U.S., visit the [National Plant Diagnostic Network](#) website.

Keep in mind that it is common for no pathogens to be found in a sample of damaged turf. This typically indicates that the turf is simply weak and struggling to survive the environmental stresses of summer. If pushing your turf too hard is the root of your problems, implementing [more-conservative maintenance practices](#) and knowing what not to do will help you successfully navigate this stressful summer.

## JUST A WHISKER TOO SHALLOW

September 06, 2024 | By Elliott L. Dowling, regional director, East Region

came across a good way to monitor sand depth on a [USGA Course Consulting Service](#) visit in Canada this week. The course is renovating everything, including bunkers. They chose a porous aggregate liner and manufactured sand to improve playability, maintenance efficiency and aesthetics. Of course, they want to protect their investment to the fullest.

Part of their strategy for doing so is using marking whiskers, sometimes called trail chasers or stake chasers, spaced throughout the bunker floors 1 inch below the desired sand depth. These are a guide for the maintenance team to alert them if sand gets shallow in any area. If



*Installing "whiskers" in the bunker floors is an easy and effective way to monitor sand depth. a whisker becomes visible in the sand, this tells you to add an inch to maintain a consistent depth. Whiskers are perfect for this because they are soft and pliable so if they were to get struck by a club during*

a shot or hit with a mechanical rake, they will bend but not break. Fellow USGA agronomist Cory Isom [wrote about this strategy](#) being used on the West Coast a few years ago and I'm happy to see it over on the east side of the continent now.

It is still a good idea to physically check sand depth occasionally, but when time is short during the season, whiskers will give you real-time feedback. Bunker renovations are popular right now, and the expectations for playability and presentation are probably as high as we've ever seen. Any tool that can help monitor sand depth without adding additional work is valuable.

### Northeast Region Agronomists:

Darin Bevard, senior director, Championship Agronomy – [dbevard@usga.org](mailto:dbevard@usga.org)

Elliott L. Dowling, regional director, East Region – [edowling@usga.org](mailto:edowling@usga.org)

Brian Gietka, agronomist – [bgietka@usga.org](mailto:bgietka@usga.org)



## IN THE WAKE OF DEVASTATION ARISES BRIGHTER RECOVERY FOR ONE GAP MEMBER CLUB



Berwick Golf Club lost a total of 320 trees during a severe June 26 storm. For the next six days, 40 to 60 members hauled fallen timber and debris. The golf course reopened in a week, but Berwick is still picking up the agronomic pieces.

On the road to recovery is a new GAP member benefit: the USGA Course Consulting Service. The USGA Course Consulting Service includes a site visit from an expert agronomist. Brian Gietka serves as consulting agronomist for the USGA Mid-Atlantic Region, which includes GAP. Gietka works in concert with Jeff Kinney, Senior Director of Sales & Operations for the USGA Green Section.

"When Brian does that visit at Berwick, he will be looking at trees from an agronomic perspective, so looking at turf health and playability of trees and the impact it has on playability of the golf course," Kinney, 44, of Milford, Mass., said. "While he's out there, he can also provide additional consulting for the agronomic leadership there beyond just looking at the trees. We're there to grow golfer satisfaction."

Through GAP, the upcoming Berwick visit comes at zero cost to the club.

"We're fortunate in GAP to have so many facilities with courses in pristine conditions with skilled superintendents. The USGA Course Consulting visits allow these superintendents to work with an agronomist (Brian) with a wealth of knowledge that can be used to collaborate on solutions to take conditioning, water usage, and maintenance costs to an improved level," Steve Latos, GAP Director of Member Services, said.

During a site visit, Gietka examines components such as infrastructure, putting greens and tees. "Where can we grow from here?" is the resounding query. The club receives a detailed report that provides answers.

The timing for a USGA Course Consulting visit is divine intervention for Berwick.

Following the June 26 storm, Berwick member Scott Scheirer connected with GAP Executive Committee member Larry McClure. A conversation set the course consulting wheels in motion.

"For GAP to pull the strings to make this happen at no cost to the club ... it's an incredible opportunity. We're humbled and gracious for it," Berwick President Tom Cicini, 40, of Berwick, Pa., said. "Our course was decimated. Our course needed something like this. For us to get [a USGA Course Consulting visit] with the assistance of GAP is incredible. It's something we won't soon forget. We're very thrilled at the opportunity."

The USGA Course Consulting Service is supported by the Philadelphia Association of Golf Course Superintendents.

If your club is interested a USGA Course Consulting visit, contact Jackson Beers, GAP Director of Membership Growth, at 610-687-2340 ext. 0038 or via email at [jbeers@gapgolf.org](mailto:jbeers@gapgolf.org).

**envu**™ Golf

**Built on a 50-year legacy of environmental excellence**

Learn More →



# Conquer Heat with INFINITE

Fortified with Diuturon and Protected with Templar



Infinite™ is the first soil surfactant that includes multiple ingredients, designed to manage both soil moisture, plant stress and recovery. A multiple polymer product, fortified with two novel technologies; Diuturon and Templar. Patent pending Diuturon polymer technology, improves the longevity and residual of the product in the soil. Diuturon allows lower use rates. Infinite

also includes Templar, which reduces stress associated from heat and drought through enhancing the plants' natural defense mechanisms. The combination of reduced hydration stress and improved turf defense makes Infinite's performance endless.



Contact us to learn more | [info@target-specialty.com](mailto:info@target-specialty.com)  
[target-specialty.com/gjb](http://target-specialty.com/gjb) | [f](#) [t](#) [in](#) [c](#) [ig](#)



## GOLF COURSE IRRIGATION WITH LOCAL SUPPORT

Count on Toro and Turf Equipment and Supply Company for innovative products, services, and local support to keep your golf course operation running smoothly.

**TURF EQUIPMENT AND SUPPLY**

[www.turf-equipment.com](http://www.turf-equipment.com)  
800-827-3711

# OUR RESEARCH GUARANTEES YOUR CONTROL

Supported by leading products and 10+ years of research, WeevilTrak<sup>SM</sup> now guarantees control of annual bluegrass weevils, white grubs and turf caterpillars.



**92%** of WeevilTrak subscribers said they time their applications closely to WeevilTrak recommendations.

**88%** were satisfied with their level of control in 2021.\*

### ABW ASSURANCE IN 3 STEPS

- 1 Register at [WeevilTrak.com](http://WeevilTrak.com)
- 2 Follow course(s) near you
- 3 Download and follow the ABW assurance program sheet



syngenta.

@SyngentaTurf #WeevilTrak

\*Survey of 258 golf course superintendents conducted via TechTrends in Sept. 2021.  
© 2023 Syngenta. Important: Always read and follow label instructions. Some products may not be registered for sale or use in all states or countries. Please check with your state or local Extension Service to ensure registration status. Scimitar<sup>SM</sup> GC is a Restricted Use Pesticide. Acelepryn<sup>SM</sup>, Provaunt<sup>SM</sup>, Scimitar<sup>SM</sup>, WeevilTrak<sup>SM</sup>, the Alliance name, the Purpose logo and the Syngenta logo are trademarks or service marks of a Syngenta Group Company. All other trademarks are the property of their respective owners.

# Nutrien Solutions

**Thank you to all  
of our industry  
partners who  
support Nutrien,  
looking forward  
to a prosperous  
2024.**

**BOB BURD**  
[Robert.Burd@nutrien.com](mailto:Robert.Burd@nutrien.com)

**RYAN DAVIDHEISER**  
[Ryan.Davidheiser@nutrien.com](mailto:Ryan.Davidheiser@nutrien.com)

**LEADING THE FIELD**

©2023 Nutrien Ag Solutions, Inc. All Rights Reserved. All of the trademarks and service marks displayed are marks of their respective owners 9454\_K2323



## GOLF COURSE SOLUTIONS WITH LOCAL SUPPORT

Count on Toro and Turf Equipment and Supply Company for innovative products, services, and local support to keep your golf course operation running smoothly.

TURF EQUIPMENT AND SUPPLY

[www.turf-equipment.com](http://www.turf-equipment.com)

800-827-3711

SHREINER



TREE CARE

**SERVING THE PAGCS FOR OVER 25 YEARS**

---

## SERVICES

- Emergency Clean Up
- Tree Pruning
- Tree Removal
- Tree & Shrub Plant Health Care
- Lightening Tree Protection
- Dump Site Clean Out
- Sunlight and Shade Analysis
- Tree Safety Assessments
- Tree Inventory and Mapping
- Invasive Vegetation Removal
- Specimen and Privacy Tree Planting
- Native Woodland Restoration

**LET'S GET STARTED!**



### **MIKE KACHURAK**

ISA Certified Arborist PD 2739A

ISA Tree Risk Assessment Qualified

Mobile: 570-262-3612 **CALL OR TEXT**

Email: [mikek@shreinertreecare.com](mailto:mikek@shreinertreecare.com)

SCAN FOR



APPOINTMENT

# Let's Grow PAGCS!



Liquid Fertilizers | Micronutrients | Biostimulants | Wetting Agents | Soil Amendments | Pigments  
Application Service | Bulk Delivery | Soil Analysis | Research & Consulting



American Manufacturer of Liquid Fertilizers and Plant Health Solutions for the Green Industry.  
Established in 1946 | Cranbury, New Jersey

*Let's Grow Together!*

Mike Janzer | (215) 280-6252  
Rich Sweeney, CGCS | (609) 580-0402



*Check This Out!*

[www.plantfoodco.com](http://www.plantfoodco.com)

@PlantFoodCo  

800-562-1291

EXCLUSIVELY AT  **SiteOne**  
LANDSCAPE SUPPLY



**DO MORE  
WITH  
LESCO®**

In 2022, LESCO is celebrating its 60th year of bringing innovative solutions to the green industry. LESCO – helping pros Do MORE since 1962.

Explore our solutions for professionals at [SiteOne.com/Lesco](http://SiteOne.com/Lesco)



Healthy playing surfaces,  
**PROTECTED  
ECOSYSTEMS  
AND IMPROVED  
water quality**  
isn't environmentalism.

**IT'S THE FUTURE.**  
Learn more at [branchcreekgolf.com](http://branchcreekgolf.com)

 |  SynaTek® |  |  EcoElectronics  
Solutions today, and for what's to come.

## JACOBSEN®

Jacobsen Eclipse 360 Elite



Jacobsen AR530 Mower



## Smithco

Smithco Electric Bunker Rake



Smithco 1200 Sprayer



# EVERYTHING TURF!

# Lawn and Golf

*More Than the Logo!* **supply co. inc.**

Equipment, Parts & Service for Residential, Commercial, Golf, Athletic & Snow Removal Industries.

[www.lawn-golf.com](http://www.lawn-golf.com) P: 610.933.5801 647 Nutt Rd. Phoenixville, PA 19460

# INNOVATIVE FERTILIZER

*derived from plant-based protein*

An innovative fertilizer derived from plant-based protein hydrolysate. This plant-derived fertilizer is rapidly absorbed by leaves, shoots, and roots then translocated throughout the plant. Amino Pro V promotes abiotic stress tolerance, stimulates photosynthesis and promotes increased root mass. **Are you ready to add Amino Pro V to your balanced agronomic program?** For more information, visit [www.harrells.com](http://www.harrells.com).



**Give Eric a Call Today!**

**ERIC SHILLING**  
eshilling@harrells.com  
(267) 784-4407



**Harrell's**  
Growing a Better World®

[www.harrells.com](http://www.harrells.com) | 800.282.8007



**Specializing in high quality grasses for golf courses.**

- **Tall Fescue**
- **Fine Fescue**
- **Bluegrass**
- **Bentgrass**

84 Route 77  
Elmer, NJ 08318  
856-358-4763  
[CoombsFarms.com](http://CoombsFarms.com)

**Kevin Coombs 856-542-4178**



**NEXT BONNIE NEWSLETTER DEADLINE  
OCTOBER 15**

**PLEASE SUBMIT CONTENT TO:  
KLIBSCH@PAGCS.ORG**

## YOUR FULL-SERVICE TURF MANAGEMENT PARTNER



Helena is your full-service turf management partner and offers a wide range of innovative products, course mapping and nutrient analysis.

To achieve the quality you desire, contact your local Helena representative or visit [HelenaProfessional.com](http://HelenaProfessional.com).

Conor Geisel  
Sales Representative  
609-980-9355



*People...Products...Knowledge..*

Important: Always read and follow label instructions. Some products may not be registered for sale or use in all states and counties. Please check with your Helena representative to ensure registration status. Helena and People... Products... Knowledge... are registered trademarks of Helena Holding Company.  
© 2022 Helena Holding Company. HPG0422P



## GEORGE E. LEY COMPANY

Golf course Construction, Renovation, and Irrigation

**610-942-3809 • [GOLFINFO@GELCOGOLF.COM](mailto:GOLFINFO@GELCOGOLF.COM)**



**[gelcogolf.com](http://gelcogolf.com)**



# Arader

TREE SERVICE

Pat Hartman  
 Certified Arborist  
 PAGCS Member  
 pat@aradertree.com  
 610-637-8299



## Our Services include:

- Tree removal and pruning to improve air flow & sunlight
- Cabling & lightning protection systems
- Tree preservation
- Dutch Elm Disease and Bacterial leaf scorch treatment
- Extensive matting systems to protect turf
- A heads up approach to difficult access situations
- Timely response to all inquiries



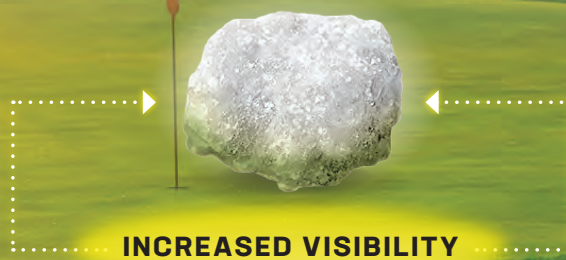
BECAUSE  
**GREAT-LOOKING**  
**TURF** ONLY TOUCHES  
 THE SURFACE.

For over 5 generations, Fisher & Son has continued to deliver the highest-quality agronomic solutions to the green industry. With a passion and expertise in all facets of sports turf, landscape, and horticulture management, you will always know the Fisher team has you covered.

Count on the Mid-Atlantic's  
 Green Industry Innovators.  
 800.262.2127 | FisherandSon.com



# A NOTICEABLY DIFFERENT — GREENS-GRADE — FERTILIZER



## Country Club<sup>®</sup> IV Increased Visibility

Country Club IV (Increased Visibility), the latest premium greens grade products from LebanonTurf that have been specifically designed with lighter color granules to help ensure more accurate and effective fertilizer applications to the putting surface. Featuring Meth-Ex<sup>®</sup> high-activity methylene urea slow-release nitrogen, they deliver consistent and predictable long-term feeding. Learn more at [LebanonTurf.com](http://LebanonTurf.com) or call **1-800-233-0628**.

### COUNTRY CLUB IV PRODUCTS

- 0-0-25 SOP 2% Fe 2% Mg 2% Mn
- 17-0-17 50% Meth-Ex SOP 1% Fe .5% Mn
- 18-3-18 85% Meth-Ex SOP
- 18-9-18 70% Meth-Ex SOP .5% Fe .5% Mg .28% Mn
- 24-3-12 75% Meth-Ex SOP



Scan here to  
view Quail Hollow  
video testimonial

# >> PLEASE SUPPORT THOSE WHO SUPPORT US!

## PLATINUM

---

[Pocono Turf](#)  
[Turf Equipment](#)  
[Plantfood](#)

[Shreiner Tree Care](#)  
[Synatek](#)

## GOLD

---

[Arader Tree Service](#)  
[Genesis](#)  
[Harrell's](#)  
[Lebanon Turf](#)  
[Lawn & Golf](#)

[Aquatrols](#)  
[Ewing Irrigation](#)  
[Fisher & Son](#)  
[Noble Turf](#)

## SILVER

---

[ENVU](#)  
[Mitchell Products](#)  
[Aer-Core](#)  
[BASF](#)  
[John B Ward](#)  
[NuFarm](#)  
[Total Turf Golf Services](#)  
[George E. Ley Company](#)  
[SiteOne](#)

[Target Specialty Products](#)  
[Helena](#)  
[Grass Roots](#)  
[Coombs Sod](#)  
[Nutrien](#)  
[Turf Trade](#)  
[Davisson Golf](#)  
[Syngenta](#)

## BRONZE

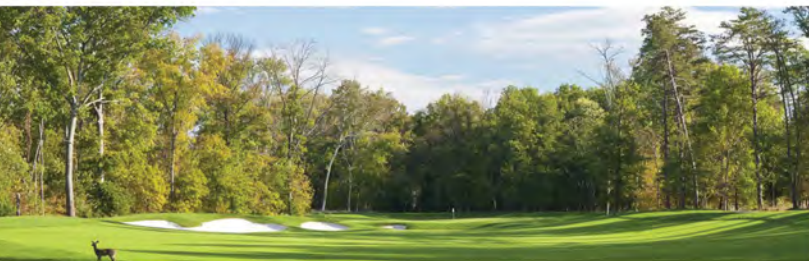
---

[Finch Turf](#)  
[Windview Athletics](#)  
[Double D Turf](#)  
[Dryject](#)  
[East Coast Sod](#)  
[PBI Gordon](#)  
[FMC](#)

[Corteva](#)  
[KM Golf Sales](#)  
[Central Sod](#)  
[First Turf and Ornamental](#)  
[American Golf Grading](#)  
[Sox Erosion](#)



2024  
**PATRIOT**  
**GOLF CLASSIC**  
 BENEFITING  
**FOLDS OF HONOR**



**OCT 15 2024**



**FOLDS OF HONOR**



**ABOUT FOLDS OF HONOR**

*Folds of Honor helps provide scholarships to spouses and children of fallen and disabled service members and first responders.*

**ABOUT THE CROSSVINES**

*Created by the vision of Montgomery County Revenue Authority, The Crossvines is a stunning, newly constructed facility that includes an artisan bistro, event space, winery production and research facility, and championship golf course.*

**TOURNAMENT SCHEDULE**

- 10:00 - 11:15 am: Registration and brunch
- 11:30 pm: Shotgun start for scramble
- 4:00 pm: Contests and cocktail hour
- 5:00 pm: Dinner
- 5:45 pm: Awards, Raffles, and Folds of Honor Presentation



**ONE TEAM, MANY CAUSES FOUNDATION** is the entity supporting the many charitable causes of Turf Equipment and Supply Company and Storr Tractor Company. Turf Equipment and Storr Tractor believe they share a responsibility to give back and make a positive difference in the various causes that are important to their employees, customers, and turf industry professionals. One Team, Many Causes is currently seeking 501(c)(3) status and has submitted its completed Form 1023 to the IRS. Upon receipt of the IRS ruling letter, our 501(c)(3) tax exempt status is anticipated to be retroactive to August 1, 2024.