



# The BONNIE GREENSWARD

OUR 97<sup>TH</sup> SEASON

2022 VOL. II



Hand Rollers Championship

## FORWARD IS A PACE

Much has and will be said about summer '22: all the clichés will be used... "one for the record books," etc. Onward to fall. As the President's Message on page 2 points out, what we do know lies ahead are some premier and inaugural events and initiatives.

First up will be the Golf Championship and Business Meeting on 10/10. Note the rescheduled Member-Member is 11/1, and the shotgun start will be backed up to 10:30-10:45 a.m. [approx], frost delay dependent. As always, keep an eye on your inboxes and the website for more information. Be sure to follow the PAGCS on social media as well.

Enjoy this latest issue of **The Bonnie!** ♦

## SAVE THESE DATES!

The PSU Turf Job & Internship fair is coming together nicely. Those seeking employees for 2023 will have access to ~100 students looking for 3 and 6-month internships or full time positions. Still some spots left for the October 4th event. [watschke.square.site](http://watschke.square.site)

OCTOBER 3, 2022  
Watschke  
Memorial Golf  
Tournament  
Penn State Blue Course

NOVEMBER  
15-17, 2022  
PSU Golf  
Turf Conference  
Penn State HUB Student Union

OCTOBER 4, 2022  
PSU Turfgrass  
Job Fair  
Penn State HUB Student Union

FOR ADDITIONAL  
DETAILS, VISIT  
[PATURF.org](http://PATURF.org)

## RECORD STRESS

Summer '22 put stress on every member of the PAGCS family and industry network. Here comes another cliché: "It takes a village" and this summer was a true testament to the strength of the network that is the PAGCS and industry.



Pictured: Ewing Irrigation's Brian Kealy, right, helping solve an emergency irrigation issue.

Photo credit: Jennifer Torres,  
GCS at Westlake Golf Course.

## >>EVENTS

### PAGCS GOLF CHAMPIONSHIP

Monday, October 10, 2022

Kennett Square Golf &  
Country Club

### PGA PRO-SUPER BETTER BALL OF PARTNERS

Monday, October 24, 2022

### MEMBER-MEMBER TROPHY EVENT

Tuesday, November 1, 2022

Rivercrest Golf Club and Preserve

### HAPPY HOUR WITH THE PVCMA

Thursday, November 3, 2022

More info to come!

### PAGCS HOSPITALITY EVENT IN ORLANDO

Wednesday, February 8, 2022

[Visit the website events tab for more!](#)

## #HEADINGTO100

### LOGO CONTEST ANNOUNCEMENT

Contest details to come soon!



## >> OFFICERS

### **PRESIDENT**

Gregory D'Antonio  
Concord Country Club  
[gdantonio@concordclub.org](mailto:gdantonio@concordclub.org)

### **VICE PRESIDENT**

Darren Farrar  
Old York Road Country Club  
[dfarrar@oyrcc.com](mailto:dfarrar@oyrcc.com)

### **TREASURER**

Patrick Michener  
Bidermann Golf Club  
[pmichener@vicmead.com](mailto:pmichener@vicmead.com)

### **SECRETARY**

Mark Rubbo  
Spring Ford Country Club  
[markrubbo@comcast.net](mailto:markrubbo@comcast.net)

### **PRESIDENT EMERITUS**

Doug Rae  
Applecross Country Club  
[doug@applecrosscc.com](mailto:doug@applecrosscc.com)

## >> BOARD MEMBERS

Tim Edwards, Director  
Rivercrest Golf Club  
[tge@rivercrestgolfclub.com](mailto:tge@rivercrestgolfclub.com)

Greg Eisner, Director  
Fieldstone Golf Club  
[eisner128@gmail.com](mailto:eisner128@gmail.com)

Chris Toporski, Director  
LuLu Country Club  
[christoporski@gmail.com](mailto:christoporski@gmail.com)

Bill Corcoran, Industry Representative  
VENTRAC  
[BCorcoran@VENTRAC.com](mailto:BCorcoran@VENTRAC.com)

Michael Kachurak, Industry Representative  
Shreiner Tree Care  
[mikek@shreiner tree care.com](mailto:mikek@shreiner tree care.com)

Nick Sujkowski, Assistant Outreach  
Concord Country Club  
[nicksuj@gmail.com](mailto:nicksuj@gmail.com)

Jeff Haas, Golf Chairman  
Golf Cart Services  
[jhaas@golfcartservices.com](mailto:jhaas@golfcartservices.com)

## >> PAGCS OFFICE

Kristen Liebsch  
Executive Director  
Newsletter Editor  
484-467-5298  
[kliebsch@pagcs.org](mailto:kliebsch@pagcs.org)

## >> THE PM

Each year seems to get hotter, and the summer extends longer after Labor Day. Action News reported this was the hottest August in the area on record, so I am sure many of you who read this do so with tired eyes.

Being a Superintendent in the Mid-Atlantic is certainly no easy task. As cooler overnights arrive, I hope that all of you can take time away after a long summer. While there is no off-season anymore, it is important for all of us to make time away with family and friends a priority.

To our Affiliate members and sponsors, we hope the supply chain and inflation rollercoasters are starting to level off and this off-season can also be a time to re-charge for all of you after a hectic three seasons since COVID hit.

Fall is a great time for all of our members to utilize the Association for enjoyment and networking. We have two great golf events, the first at Kennett in October and a rescheduled event November 1 at Rivercrest. There is also a networking event with the CMAA and a holiday event in the works. While projects will begin and many will be aerating, we hope you can break away to enjoy two premier courses and meet new friends in the industry.

On October 24th, we are teaming with the Philadelphia section PGA for the 1st ever Superintendent-Pro event hosted by Brandon Collins. As demands and expectations increase and we all must get creative with employee retention and attraction, the Board is trying to better align with our peers at the PGA and Philly CMAA by increasing networking events. We hope many of our Superintendent members will participate at Overbrook. Please have your facility's Pro sign up for the event.

Finally, a special thank you to Kristen Liebsch for her hard work over the past season. As time constraints on our members increase, our Board relies more on Kristen each year. She exceeds our expectations, and as an organization we are strong financially and organizationally through her efforts. If you haven't yet had a chance to listen to Kristen on the Golf Course Industry podcast, I would encourage you to do so. ♦

Respectfully,



## >> ISSUE GUIDE

BOARD MEMBER PROFILE .....	4
ASSISTANT'S CORNER.....	6
MEMBER & INDUSTRY NEWS.....	8
TEAM MATCH UPDATE .....	13
BELTS, BEDKNIVES AND BOLTS...	17
FIRST GREEN.....	18
FIRST TEE .....	24
PETS OF THE PAGCS.....	25
#HEADING TO 100 .....	26
EVENTS .....	27
GCSAA.....	28
USGA .....	29



**Your Exclusive  
Rain Bird® Golf Supplier!**

[f](#) [t](#) [in](#) [v](#) [o](#)

**LEAN ON US**

**Brad Helcoski** Senior Regional Golf Sales Account Manager  
484.901.9711, [bhelcoski@ewingirrigation.com](mailto:bhelcoski@ewingirrigation.com)

**Brian Kealy** Northeast Golf Service  
856.410.7840, [bkealy@ewingirrigation.com](mailto:bkealy@ewingirrigation.com)

**Fred Rapp** Northeast Regional Golf Sales Manager  
848.225.4618, [frapp@ewingirrigation.com](mailto:frapp@ewingirrigation.com)

**We look forward to helping you meet your golf course needs.**  
Ewing Irrigation & Landscape Supply is proud to serve as your exclusive distributor of all Rain Bird® Golf materials.

**EWING 100 YEARS** | **RAIN BIRD**

**EwingIrrigation.com | 800.343.9464**

## >> 2022 SPONSORS

### PLATINUM

[Pocono Turf](#)

[Turf Equipment](#)

[Fisher & Son](#)

[Plant Food](#)

[Shreiner Tree Care](#)

### GOLD

[Arader  
Lawn and Golf](#)

[Genesis  
Lebanon Turf](#)

[Harrell's  
Syngenta](#)

[Synatek](#)

### SILVER

[Noble Turf  
AER-CORE  
BASF  
Bayer](#)

[Coombs Sod  
Ewing Irrigation  
JB Ward Tree Service  
Mitchell Products](#)

[NuFarm  
Total Turf Golf Services  
Aquatrols  
SiteOne Landscape](#)

[Target Specialty Products  
Helena  
Grass Roots](#)

### BRONZE

[Windview Athletic Fields  
Double "D" Turf  
Dryject  
East Coast Sod & Seed](#)

[Finch Services  
KM Golf Sales  
Linne Industries  
PBI Gordon](#)

[FMC  
Corteva Agri Science  
Turf Trade](#)



## >>BOARD MEMBER PROFILE

### WHO:

Mike Kachurak, Industry Representative to the Board

### CAREER:

Mike is currently an ISA Certified Arborist and Client Representative for Shreiner Tree Care. He enjoys meeting with people each day, both residential and commercial, to discuss enhancing the trees and landscapes on their properties.

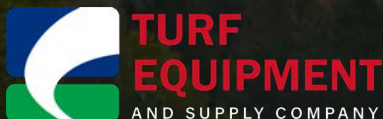
Mike began working on a golf course at a young age to get free golf and range time. This summer job sparked an interest in turf management, and he eventually attended Delaware Valley University. After graduating with a degree in Agronomy and Plant Science, Mike landed a full-time job at Merion Golf Club.

After his time at Merion, Mike changed gears and worked in golf course construction before joining the team at Shreiner Tree Care.

### PERSONAL:

Mike's roots stem from Mountain Top, a town in Northeast PA. He is married to Alexandria Kachurak, his wife of seven years. They have a welsh terrier named Macy. In Mike's free time, he enjoys golf, hunting, and cycling.

Note: Shreiner Tree Care is one of the Presenting Partners for next month's Golf Championship at KSG&CC—[CLICK HERE](#) to register



**TORO**

## GOLF COURSE SOLUTIONS WITH LOCAL SUPPORT

Count on Toro and Turf Equipment and Supply Company for innovative products, services, and local support to keep your golf course operation running smoothly.

**TURF EQUIPMENT AND SUPPLY**

[www.turf-equipment.com](http://www.turf-equipment.com)  
800-827-3711



SHREINER



TREE CARE

**SERVING THE PAGCS FOR OVER 25 YEARS**

---

## SERVICES

- Emergency Clean Up
- Tree Pruning
- Tree Removal
- Tree & Shrub Plant Health Care
- Lightening Tree Protection
- Dump Site Clean Out
- Sunlight and Shade Analysis
- Tree Safety Assessments
- Tree Inventory and Mapping
- Invasive Vegetation Removal
- Specimen and Privacy Tree Planting
- Native Woodland Restoration

**LET'S GET STARTED!**



### MIKE KACHURAK

ISA Certified Arborist PD 2739A

ISA Tree Risk Assessment Qualified

Mobile: 570-262-3612 **CALL OR TEXT**

Email: [mikek@shreinertreecare.com](mailto:mikek@shreinertreecare.com)

SCAN FOR



APPOINTMENT

# BMW CHAMPIONSHIP - WILMINGTON CC

by Nick Sujkowski, PAGCS Assistant Representative to the Board

Last month I had the pleasure of volunteering for the BMW Championship at Wilmington Country Club. It was an honor getting to join such a great operation for the week.



Assistant Golf Course Superintendent Cody Sander leads the afternoon meeting.

Prior to the arrival of volunteers, the staff at Wilmington Country Club put in a huge amount of work to make the course shine. The team had the course dialed in and well prepared after advance week, and the addition of all the volunteers allowed the team to really show off for all to see.

It always amazes me how much industry support there is for a tournament of this magnitude. In no other industry would dozens of people leave their post for a week to go and help their competitors for a big event. It's a really neat experience to see people from all over the globe come together to provide the best possible playing conditions for the top golfers in the world.

The course superintendents, assistant superintendents, and interns orchestrated the daily proceedings of the event, which



It's all thumbs up for the sundown shift on day two of the BMW.

ran like clockwork. It can't be an easy task to have 70 people who have never set foot on your golf course sent running around in the dark at 5 a.m., but they did a great job communicating with all of us.

Fortunately, the weather cooperated and provided excellent conditions to do a controlled dry down of the property. Commentators, spectators, and golfers alike were in awe at how impressive the golf course played and how firm and fast it was. This truly is a testament to the hard work done by the Wilmington staff to keep the course dry while not letting it go too far.



Nick Sujkowski, second from left, with the tech team, out on duty stimping the greens.

Congratulations to all who were involved with the event on a job well done but especially to the team at Wilmington Country Club. They put in countless hours leading up the event and did all the legwork to make that place so impressive. I would like to give a special shoutout to all of the turf managers on staff as well:

Jon Urbanski - Director of Golf Courses & Grounds

Thomas McFeeley - South Course Superintendent

Brett Snyder - North Course Superintendent

Cody Sander - South Course Assistant Superintendent

Braden Thomas - South Course Assistant Superintendent

Nick Leggin - North Course Assistant Superintendent

Gavin Kopczynskie - North Course Assistant Superintendent

Drew Massetti - Irrigation Technician

Kenneth Lacek - Spray Technician

Jack Brown - Agronomy Intern

Scott Verchick - Head Equipment Manager

Nick Buoni - Assistant Equipment Technician



That may or may not be the smoking hot AC unit that cleared the room behind this team—as they say at WCC: #teamworkmakesthedreamwork

## ASSISTANT'S CORNER

Got any cool projects or stories to share in 2022? We want to hear from you!  
Contact Nick: [nicksuj@gmail.com](mailto:nicksuj@gmail.com)



# UNDERSTANDING GOLF'S 'SANDWICH GENERATION'

By: David Lorentz • September 15, 2022

It's a bittersweet thing – giving up my status among the highly-dynamic, ever-evolving, often-vilified 18- to 34-year-old cohort. For the first time in my 10-year career at NGF, I'm no longer the self-proclaimed spokesperson for the "young crowd." That torch has been passed.

Now, as I leave behind provisional adulthood and settle into this more refined life stage full of rapid personal development and major life transitions (I just got married), I find myself curious to understand my new peer group – the mostly-overlooked 35- to 49-year-olds. What makes us different? As golfers, how do our needs and behaviors contrast with other groups?

Turns out there are some interesting distinctions. Including foundationally – our motivations for playing golf skew differently than our younger and older counterparts. The biggest differentiator? For us, golf is a means to recover from stress and

recharge the mental battery (this particular motivation charts like a bell curve across the age spectrum, as the graphic below illustrates).

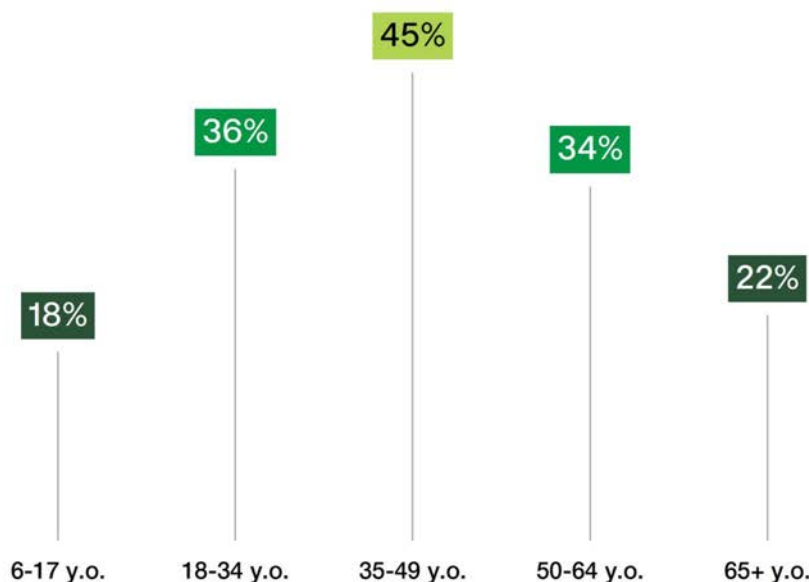
That stress relief is a key driver for our group should make sense. This is a time in life when individuals assume the greatest number of social roles – worker, spouse or partner, parent, adult child – and must divide time and energy across these roles. Many of us are also part of what demographers call the "sandwich generation," faced with the added time and financial pressures of raising young children and caring for aging parents. And of course these tend to be the most demanding years of a person's career, too. Data from the Bureau of Labor Statistics (BLS) shows that people between the ages of 30 and 45 had the greatest increase in resignation rates between 2020 and 2021.

[CLICK HERE](#) to keep reading

## Golf as a Stress Reliever Needs Fulfillment by Age Cohort



"Recovering from stress/recharging my mental 'battery'"<sup>†</sup>



Source: National Golf Foundation  
September 2022

<sup>†</sup> Q. Which of the following needs does golf fulfill for you? (Select all that apply)

This graphic can only be republished in its original form. Data herein cannot be visually repurposed without permission from NGF.



## AN ACE OF A MEMBER

If you have met him, you know he's aces! Association member John Chassard has stepped up to host the MET Tournament—a regional competition for chapter bragging rights.

When the PAGCS won the MET in 2021, held last October at Saratoga National Golf Club, it was given an opportunity to host in 2022. Thank you John and Lehigh Country Club for stepping up to bring this competition to our region.

But first: he needed to achieve that somewhat elusive hole in one at Lehigh this August! Congrats, John. **And thank you to PAGCS Platinum Sponsor Tom Weinert of Plant Food for capturing the moment!**

**In John's words:** My first one, which was very meaningful to have happen at Lehigh—the 7th hole at 207 yards I hit 19 degree hybrid. It was a thing of beauty! The other 86 strokes that day weren't nearly as pretty! ♦



## PROJECTS AND PLANS --ACCOMPLISHED!

PAGCS members Andrew Green [golf course architect] and Ben Kovacs [golf course superintendent] recently celebrated the completion of a major project at Waynesborough Country Club. Many congratulations!

**The PAGCS will be doing some upcoming features highlighting recent/current/ongoing projects on member courses. Please let us know if we can share your hard work!**



**waynesboroughcc** We celebrated the conclusion of our golf course project last night with Golf Course Architect Andrew Green.

First and foremost, thank you to our members for your patience. And thank you Andrew for taking on this special project, from the early planning process to its execution. It's been a long three years!

Club President Jim Wright gifted Andrew an Honorary Membership to the club for his outstanding work and dedication to the golf course project.

Left to right 📷: Josh Phillips, Jim Wright, Andrew Green, Ben Kovacs, Rob Lodge, Joe Furko, and Adam Brigham.



# Let's Grow PAGCS!



Liquid Fertilizers | Micronutrients | Biostimulants | Wetting Agents | Soil Amendments | Pigments  
Application Service | Bulk Delivery | Soil Analysis | Research & Consulting



American Manufacturer of Liquid Fertilizers and  
Plant Health Solutions for the Green Industry.  
Established in 1946 | Cranbury, New Jersey

*Let's Grow Together!*

Mike Janzer | (215) 280-6252  
Rich Sweeney, CGCS | (609) 580-0402

[www.plantfoodco.com](http://www.plantfoodco.com)

@PlantFoodCo  

800-562-1291



*Check This Out!*



# ONE SYSTEM. ENDLESS POSSIBILITIES



Makita's purpose-built motors, battery technology, and enhanced communications work together to deliver unmatched power, speed, and run time. Get maximum performance and efficiency with LXT Products.



## Conquer Heat with INFINITE

Fortified with Diuturon and Protected with Templar



Infinite™ is the first soil surfactant that includes multiple ingredients, designed to manage both soil moisture, plant stress and recovery. A multiple polymer product, fortified with two novel technologies; Diuturon and Templar. Patent pending Diuturon polymer technology, improves the longevity and residual of the product in the soil. Diuturon allows lower use rates. Infinite also includes Templar, which reduces stress associated from heat and drought through enhancing the plants' natural defense mechanisms. The combination of reduced hydration stress and improved turf defense makes Infinite's performance endless.



Contact us to learn more | [info@target-specialty.com](mailto:info@target-specialty.com)

[target-specialty.com/gjb](http://target-specialty.com/gjb) | [f](#) [t](#) [in](#) [@](#)

100-000000-01-000001

Providing Services & Solutions to the  
Golf & Sports Turf Industries



### SERVICES

Fraze Mowing  
Sandmaster Drainage  
Field Renovation  
Fertilizing  
Solid Tine & Core Aeration  
Verticutting

Deep Tine Aeration  
Debris Management  
Slit Seeding  
Spraying  
Topdressing  
Infield Preparation



CONNECT WITH US:

[f](#) Windview Athletic Fields

[t](#) @Windviewinc

[www.windviewathleticfields.com](http://www.windviewathleticfields.com) | [chris@windviewathleticfields.com](mailto:chris@windviewathleticfields.com) | 610-608-3175  
1325 Goshen Parkway | West Chester, Pa 19380



YOU MAKE THE LIST,  
WE'LL CHECK THE BOXES.

- ☒ divot mix
- ☒ fertilizer
- ☒ seed
- ☒ arbor solutions
- ☒ erosion control
- ☒ mulch + compost
- ☒ disease control
- ☒ bunker sand
- ☒ soil testing
- ☒ tools + accessories
- ☒ topdressing
- ☒ aquatic solutions

JUST ASK A GENESIS TEAM MEMBER

Ben Brace 570.472.1248 \ [bbrace@genesisgreensupply.com](mailto:bbrace@genesisgreensupply.com)

Tom Currie 484.844.5214 \ [tc@genesisgreensupply.com](mailto:tc@genesisgreensupply.com)

Tom Defino 302.354.2840 \ [tomd@genesisgreensupply.com](mailto:tomd@genesisgreensupply.com)

[WWW.GENESISGREENSUPPLY.COM](http://WWW.GENESISGREENSUPPLY.COM) | 717-759-8151

Follow Us: [tweet](#) @genesisturf [fb](#) /genesisgreensupply [insta](#) @genesisturfgrass





**Specializing in high  
quality grasses for  
golf courses.**

- **Tall Fescue**
- **Fine Fescue**
- **Bluegrass**
- **Bentgrass**

84 Route 77  
Elmer, NJ 08318  
856-358-4763  
CoombsFarms.com

**Kevin Coombs 856-542-4178**



**Arader Tree Service**

Pat Hartman at 610-637-8299  
Pat@aradertree.com  
www.aradertree.com



**The Most Difficult Tree Removals, Pruning and Tree Care Needs, Done When the Time is Right.**

• Extensive Matting Systems to Protect Turf

• A Heads Up Approach to Difficult Access Situations



# JOHN B. WARD & CO.

EST

1957

## ARBORISTS

Bryn Mawr, PA

CARING FOR THE MAIN LINE'S CANOPY SINCE 1957



- 🌿 LARGE TREE PRUNING
- 🌿 ORNAMENTAL PRUNING
- 🌿 INSECT & DISEASE CONTROL
- 🌿 TREE REMOVAL
- 🌿 FERTILIZATION
- 🌿 PLANT HEALTH CARE

Contact Us 📞 610.525.1562  
[www.johnbward.com](http://www.johnbward.com)



PO BOX 280, BRYN MAWR, PA 19010



*Fast Play Every Season*  
WITH WOODY'S  
**REMOVE & RECYCLE  
SERVICES**

- LARGE BRUSH PILE AND DEBRIS REMOVAL
- ONSITE GRINDING AVAILABLE
- NO JOB TOO BIG –  
LARGE CONTAINER TRUCKS AVAILABLE



*Premium Wholesale*  
**MULCH DELIVERIES**

- DELIVERIES TO COUNTRY CLUBS AND COURSES
- 65 YARD / TRACTOR TRAILER LOADS AVAILABLE

Call us **610-337-1863**  
[woodysrecycling.com](http://woodysrecycling.com)

**LOCAL PICKUPS & DELIVERIES**

*Open Monday-Saturday, 7am - 5pm*  
453 CROOKED LANE | KING OF PRUSSIA, PA



# >> TEAM MATCH UPDATE

## PAGCS TEAM MATCHES 2022--FINAL ROUNDS COMING UP

"It's been a crazy summer with heat, drought and now flooding, so to see we are almost into the finals is pretty great," says Jeff Haas, PAGCS Golf Chairman and Team Match organizer.

To all participants and superintendent hosts, thank you for a successful Match season and best wishes for the final rounds.

PAGCS Gross Match Play 2022			
Play by Date: 7/2	Play by Date: 8/20	Play by Date: 10/1	
1 Haas/Johnson			
Match 1	Haas/Johnson		
8 Bigelow/Chapin	6&5 @ Gulph Mills GC		
	5	Haas/Johnson	
4 Stephens/Gosselin	7/6 @ Rivercrest		
Match 2	Zurybida/Anderson		
5 Zurybida/Anderson	3&2 @ Lehigh CC		
	7		
3 Helcoski/Farrar			Champions
Match 3	Helcoski/Farrar		
6 Gorniak/Linkewich	5&4 @ Squires GC		
	6	Berger/Bromwell	
2 Kachurak/Tristani	3@2 at Concord CC		
Match 4	Berger/Bromwell		
7 Berger/Bromwell	2&1 @ Concord CC		

PAGCS Net Match Play 2022			
Play by Date: 6/11	Play by Date: 7/30	Play by Date: 9/3	Play by Date: 10/1
	1 Saunders/Rider		
	5	Saunders/Rider	
8 Harley/Rogers			
Match 1	Harley / Rogers		
9 Sweeney/Livingston	7&6 @ Weyhill		
	7	Currie/Wolfe	
4 Currie/Wolfe			
Match 3	Currie/Wolfe		
5 Ernst/Corcoran	3&2		
	9		Champions
2 Schell/Merrick			
	6	Weinert/Chassard	
7 Berger/Sujkowski			
Match 2	Weinert/Chassard		
10 Weinert/Chassard	2up @ Concord CC		
	8	Weinert/Chassard	
3 Janzer/Hartman			
Match 4	Lubold/Stricker		
6 Lubold/Stricker	4&3 @ Rolling Green GC		
	8	Weinert/Chassard	
		3&2 @ Applebrook GC	



**Aerate and Amend Without Cores**  
18 Greens per Day, Ready for Quality Rounds the Next Day

Aerate, amend,  
play next day

**DryJect™**

DryJect.com • 800-270-8873

Search DryJect | DryJect Technologies | @DryJect







*Your professional  
turf solutions partner  
for over 50 years.*

**Chris Friel**  
**215-429-8084**

---

**Chris Zelle**  
**732-580-2683**

**Matt Paulina**  
**610-883-6108**

---

**Scott May**  
**215-307-7712**

**Office**  
**215-582-5545**

**[www.poconoturf.com](http://www.poconoturf.com)**





**KM**  
GOLF SALES

KMGOLFSALES PROUDLY REPRESENTING  
CUTTER & BUCK/CLIQUE APPAREL  
AND AHEAD HEADWEAR

**ahead**   **CLIQUE**  
CUTTER & BUCK REG. TRADEMARK

KEVIN MCCLELLAN  
215-519-0837 • KMGOLFSALES@OUTLOOK.COM

Don't just follow contours. Own them.



2700/2750 PrecisionCut™/E-Cut™ Triplex Mowers

 **JOHN DEERE**  
GOLF

**FINCH**

www.finchinc.com

 @finchturf

"SERVING THE TURFGRASS PROFESSIONAL SINCE 1978"



**grass roots**

GRASS ROOTS TURF PRODUCTS  
4 Middlebury Boulevard, Suite 7  
Randolph, NJ, 07869



WE PRIDE OURSELVES IN

- CUSTOMER SERVICE
- TECHNICAL SUPPORT
- QUALITY PRODUCTS



973-252-6634

www.griturf.com

sales@griturf.com

A  
**NOTICEABLY  
DIFFERENT**  
GREENS-GRADE  
**FERTILIZER**



INCREASED VISIBILITY

**LebanonTurf**

INTRODUCING... **Country Club IV (Increased Visibility)**, the latest premium greens grade products from LebanonTurf that have been specifically designed with lighter color granules to help ensure more accurate and effective fertilizer applications to the putting surface. Featuring Meth-Ex® high-activity methylene urea slow-release nitrogen, they deliver consistent and predictable long-term feeding. Learn more at **LebanonTurf.com** or call **1-800-233-0628**.

**COUNTRY CLUB IV PRODUCTS**

0-0-25 SOP 2% Fe 2% Mg 2% Mn

17-0-17 50% Meth-Ex SOP 1% Fe .5% Mn

18-3-18 85% Meth-Ex SOP

18-9-18 70% Meth-Ex SOP .5% Fe .5% Mg .28% Mn

24-3-12 75% Meth-Ex SOP

**Country Club® IV**  
Increased Visibility



**TOTAL TURF**  
GOLF SERVICES  
INTEGRITY . QUALITY . SAFETY . CARE

*Helping to make golf better  
in Philadelphia since '93!"*



7th Hole  
Aronimink Golf Club  
Master Plan Restoration Completed May 2018  
Hanse Golf Design



Healthy playing surfaces,  
**PROTECTED  
ECOSYSTEMS  
AND IMPROVED  
water quality**  
isn't environmentalism.

**IT'S THE FUTURE.**  
Learn more at [branchcreekgolf.com](http://branchcreekgolf.com)

  **SynaTek** | **GOLF** |  **Ecotronics**  
Solutions today, and for what's to come.

**JACOBSSEN®**

Jacobsen Eclipse 360 Elite



Jacobsen AR530 Mower



**Smithco**

Smithco Electric Bunker Rake



Smithco 1200 Sprayer



**EVERYTHING TURF!**

**Lawn and Golf**  
*More Than the Logo!* **supply co., inc.**

Equipment, Parts & Service for Residential, Commercial, Golf, Athletic & Snow Removal Industries.

[www.lawn-golf.com](http://www.lawn-golf.com) P: 610.933.5801 647 Nutt Rd. Phoenixville, PA 19460



## >>BELTS, BEDKNIVES, & BOLTS

### TECHNICALLY: ALL STARS WITH AN ALL STAR

The backbone of most successful golf course maintenance operations is its equipment management team. Nothing more could be truer of the equipment management professionals who rocked the recent BMW.

Top Photo: Among the all stars, head equipment manager for Wilmington Country Club, Scott Verchick, at the wheel with Tim, brother to Wilmington's Head of Grounds Jon Urbanski.

Then another all star stepped in to pay tribute to the team: Left to right are Nick Buoni, assistant EM at WCC; Shannon Homrighansen, volunteer; Fanny Sunesson, hall of fame caddie; Scott Verchick, WCC's head equipment manager; Tim Urbanski Fieldstone; John Lermond, Bidermann; and Matt Waily, volunteer.



### CONGRATULATIONS TO PAGCS EM



GCSAA @GCSAA · 16h

Congrats to Pennsylvania EMs, Frank McQuiggan, Whitemarsh Valley EM, & @Kipp\_Kayla, @Nemacolin EM — the first female — on achieving the Certified Turf Equipment Manager designation — the highest recognition that can be achieved by turf EM professionals. [gcsaa.org/ctem](https://gcsaa.org/ctem)



## BELTS, BEDKNIVES & BOLTS

the BBB features content for and by our EM category members--the backbone of many successful operations. Please reach out if you would like to contribute. Contact Kristen: [klibsch@pagcs.org](mailto:klibsch@pagcs.org)

We've got you Covered

**Exteris<sup>™</sup>  
Stressgard<sup>®</sup>**

Bayer CropScience LP, Environmental Science Division, 2 TW Alexander Drive, Research Triangle Park, NC 27709, 1-800-331-2867, [www.backedbybayer.com](http://www.backedbybayer.com). Bayer, the Bayer Cross and Stressgard<sup>®</sup> are registered trademarks of Bayer. Exteris<sup>™</sup> is a trademark of Bayer. Not all products are registered in all states. Always read and follow label instructions. ©2017 Bayer CropScience LP.

## PAGCS SUPERINTENDENT NAMED STATE'S LIAISON TO NATIONAL FIRST GREEN

[EXCERPTED AND ADAPTED: TO READ FULL ARTICLE, [CLICK HERE](#)]

GCSAA recently launched the First Green Liaison network to spur growth of the program throughout the United States. Liaisons will help promote First Green in their chapters, states, and regions by hosting field trips, acting as a mentor to first-time hosts and providing community outreach and support of First Green.

Congratulations to Association member Alan Fitzgerald, Ledgerrock Golf Club, and thank you for your service and devotion.

First Green Initiatives include the following:

- Support environmental education, stewardship and STEM learning.
- Illustrate the environmental and community benefits of golf courses.
- Introduce the next generation to the game and careers in golf.

First Green Liaisons will grow the program and support the mission by engaging in various activities:

- Host/organize First Green field trips and invite his/her chapter members to attend as a train-the-trainer opportunity.
- Work to create relationships with area school districts, private schools and youth groups in order to generate awareness of the First Green program.
- Speak at chapter meetings and events on First Green.
- Work with GCSAA to improve the First Green program.
- Attend local STEM and school events and staff a First Green booth.

"Perhaps their most important role will be to act as a sounding board and mentor for individuals interested in hosting a field trip but need some extra support. Liaisons will be able to travel and volunteer at field trips in their state as their schedules allow."

Last month, GCSAA announced the first nine First Green Liaisons. The goal is to have a liaison in all 50 states. [CLICK HERE](#) for full list. ♦

Alan can be reached at the following:

Alan Fitzgerald, MG  
Golf Course Superintendent  
Ledgerrock Golf Club  
Mohnton, PA  
(484) 824-3539  
[alan@ledgerrockgolf.com](mailto:alan@ledgerrockgolf.com)







# BECAUSE **GREAT-LOOKING TURF** ONLY TOUCHES THE SURFACE.

**For over 5 generations,** Fisher & Son has continued to deliver the highest-quality agronomic solutions to the green industry. With a passion and expertise in all facets of sports turf, landscape, and horticulture management, you will always know the Fisher team has you covered.

BOB SELTZER 610-704-4756 ; CONNOR FISHER 267-309-1121  
ROB JOHNSON 215-475-7998 ; THOM MAHUTE 717-940-0730  
ZACH OWEN 609-454-7727

**Count on the Mid-Atlantic's  
Green Industry Innovators.**  
800.262.2127 | [FisherandSon.com](http://FisherandSon.com)





# RESULTS

## WORTH THE SWITCH



**3 REASONS ANUEW™ PGR PERFORMS BETTER ON BENTGRASS**  
— TRIAL PERFORMANCE VS THE COMPETITION —

- Long-lasting and more active at lower application rates
- Only late-stage inhibitor to evenly regulate Poa in mixed stands
- Fast improvement of turfgrass density and appearance

// SEE RESULTS AT [NUFARM.COM/USTURF](http://NUFARM.COM/USTURF)

ASK YOUR REP HOW ANUEW PERFORMS BETTER ON RYEGRASS, POA AND BERMUDAGRASS, TOO.




©2020 Nufarm. Anuew™ is a trademark of Nufarm.



Office: 610-327-3390  
1486 S. Hanover St. • Pottstown, PA 19465  
[www.aer-core.com](http://www.aer-core.com)

**Bill Mast**  
Cell: 610-608-8319  
[bmast@aer-core.com](mailto:bmast@aer-core.com)

**Steve Thompson**  
Cell: 610-972-5933  
[sthompson@aer-core.com](mailto:sthompson@aer-core.com)

### Specialized Turfgrass Services

- Top Dressing
- Sandmaster Drainage • Drill & Fill
- Deep Tine (Solid & Coring) • Traditional Shallow Coring
- Fairway Aeration with Clean-Up

# FASTER ROOT GROWTH FOR FASTER AERATION RECOVERY




f t y

## Country Club® ROOT REVIVER

Players prefer a hole-in-one to aerification holes. Help your putting greens recover faster with Country Club Root Reviver, featuring endo mycorrhizae fungi. It speeds up aerification hole recovery and promotes root growth for overall health. Best of all, it's from Country Club, the proven fertilizer choice for golf course superintendents since 1935. Learn more at [LebanonTurf.com](http://LebanonTurf.com) or call **1-800-233-0628**.





**Firm and Fast.  
We Can Help With That.**



**AERATION SERVICES  
EQUIPMENT RENTALS  
PRODUCT SALES**

**DoubleDTurf.com**

## COREMAX 48



- Collect and Remove Cores From Site Shovel Free
- Aerate in Saturated Conditions/Cores Never Touch The Turf
- Can Complete Aerification With a Minimum Crew of Three

coremax48.com



**Providing Services & Solutions to the  
Golf & Sports Turf Industries**

### SERVICES

Fraze Mowing	Deep Tine Aeration
Sandmaster Drainage	Debris Management
Field Renovation	Slit Seeding
Fertilizing	Spraying
Solid Tine & Core Aeration	Topdressing
Verticutting	Infield Preparation

### CONNECT WITH US:



[www.windviewathleticfields.com](http://www.windviewathleticfields.com) | [chris@windviewathleticfields.com](mailto:chris@windviewathleticfields.com) | 610-608-3175  
1325 Goshen Parkway | West Chester, Pa 19380



**YOU MAKE THE LIST,  
WE'LL CHECK THE BOXES.**

- ☒ divot mix
- ☒ fertilizer
- ☒ seed
- ☒ arbor solutions
- ☒ erosion control
- ☒ mulch + compost
- ☒ disease control
- ☒ bunker sand
- ☒ soil testing
- ☒ tools + accessories
- ☒ topdressing
- ☒ aquatic solutions



**GOLF • SAFETY**

A RISK COMPLIANCE COMPANY

**Tony Gustaitis, CGCS**

Toll Free: (800) 965-8414 • MOBILE: 484-614-0999

[Tonygus@cocast.com](mailto:Tonygus@cocast.com) • [www.GolfSafety.com](http://www.GolfSafety.com)

9006 Trolley Lane, Eagleville, PA 19403



@GOLF\_COURSE\_SAFETY



@GOLF\_SAFETY

**BUILDING A SAFER WORKPLACE FOR THE GOLF INDUSTRY**

### JUST ASK A GENESIS TEAM MEMBER

Ben Brace 570.472.1248 \ [bbrace@genesisgreensupply.com](mailto:bbrace@genesisgreensupply.com)

Tom Currie 484.844.5214 \ [tc@genesisgreensupply.com](mailto:tc@genesisgreensupply.com)

Tom Defino 302.354.2840 \ [tomd@genesisgreensupply.com](mailto:tomd@genesisgreensupply.com)

[WWW.GENESISGREENSUPPLY.COM](http://WWW.GENESISGREENSUPPLY.COM) | 717-759-8151

Follow Us: [tweet/@genesisturf](https://twitter.com/genesisturf) [fb/genesisgreensupply](https://facebook.com/genesisgreensupply) [insta/@genesisturfgrass](https://instagram.com/genesisturfgrass)



# OUR RESEARCH GUARANTEES YOUR CONTROL

Supported by leading products and 10+ years of research, WeevilTrak<sup>SM</sup> now guarantees control of annual bluegrass weevils, white grubs and turf caterpillars.



92%

of WeevilTrak subscribers said they **time their applications closely** to WeevilTrak recommendations.

88%

were satisfied with their **level of control** in 2021.\*

## ABW ASSURANCE IN 3 STEPS

- 1 Register at [WeevilTrak.com](https://www.WeevilTrak.com)
- 2 Follow course(s) near you
- 3 Download and follow the ABW assurance program sheet



syngenta

@SyngentaTurf #WeevilTrak

\*Survey of 255 golf course superintendents conducted via TechValidate in Sept. 2021.

© 2022 Syngenta. Important: Always read and follow label instructions. Some products may not be registered for sale or use in all states or counties. Please check with your state or local Extension Service to ensure registration status. Scimitar<sup>®</sup> GC is a Restricted Use Pesticide. Acelepryn<sup>®</sup>, Ference<sup>®</sup>, Provaunt<sup>®</sup>, Scimitar<sup>®</sup>, WeevilTrak<sup>SM</sup>, the Alliance frame, the Purpose Icon and the Syngenta logo are trademarks or service marks of a Syngenta Group Company. All other trademarks are the property of their respective owners.



EXCLUSIVELY AT **SiteOne**  
LANDSCAPE SUPPLY



**DO MORE  
WITH  
LESCO®**

In 2022, LESCO® is celebrating its 60th year of bringing innovative solutions to the green industry. LESCO – helping pros DO MORE since 1962.

Explore our solutions for professionals at [SiteOne.com/Lesco](http://SiteOne.com/Lesco)



An Agricultural  
Sciences Company

**Tracy Tudor**  
Market Specialist-T&O, NE Region  
FMC Agricultural Solutions

C 215.704.6679

FMC Corporation  
112 Basil Street  
Marietta, PA 17547  
USA

[tracy.tudor@fmc.com](mailto:tracy.tudor@fmc.com)

[fmc.com](http://fmc.com)



**Prepping your ponds for  
the season: mandatory.**  
Pond maintenance crew: optional.

With limited resources, you want to allocate manpower wisely. Thankfully, you don't need manpower to keep your ponds clean—just solar power! PondHawk®, our highly effective subsurface aeration system, uses the power of the sun to keep water healthy and odor-free. Install a unit, and let it do its thing. PondHawk® works quietly to keep ponds clean, no electricity—or crew—required.

Learn more at [PondHawk.com](http://PondHawk.com) or call  
888-755-1950 for a customized quote.



**"SERVING THE TURFGRASS PROFESSIONAL SINCE 1978"**



**grass roots**

GRASS ROOTS TURF PRODUCTS  
4 Middlebury Boulevard, Suite 7  
Randolph, NJ, 07869



**WE PRIDE OURSELVES IN**  
- CUSTOMER SERVICE  
- TECHNICAL SUPPORT  
- QUALITY PRODUCTS



973-252-6634

[www.griturf.com](http://www.griturf.com)

[sales@griturf.com](mailto:sales@griturf.com)



**WE'VE GOT YOU COVERED**



Only **Aquatrols** offers users **Industry Leading Soil Surfactants** in combination with **nutritionals powered by RedoxTurf**. See the difference in overall turf quality when you implement our products on your greens or fairways this season.

**Tom Valentine**  
Northeast Territory Manager  
[tvalentine@aquatrols.com](mailto:tvalentine@aquatrols.com)  
(610) 299-4470  
[www.aquatrols.com](http://www.aquatrols.com)



## FIRST TEE CELEBRATES 25TH ANNIVERSARY, RECOGNIZES PHILA CHAPTER WITH TOP HONORS

Greater Philadelphia (FTGP) has been named the number one chapter across the First Tee international network for the second time in three years. Through the chapter's work with over 46,000 young people of the Greater Philadelphia area, FTGP builds experiences that build character in Philadelphia's youth.

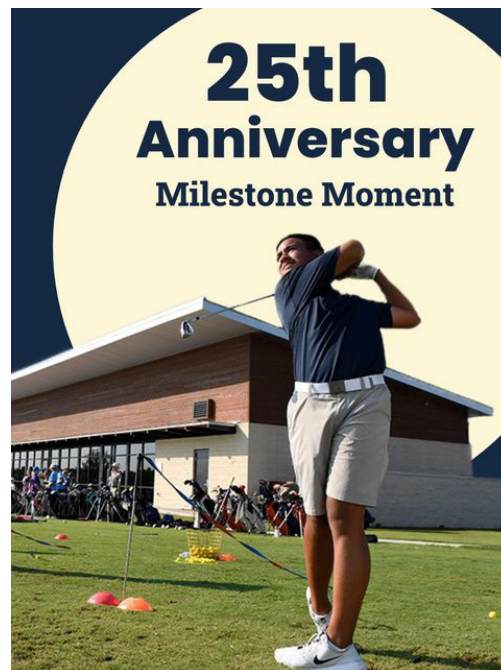
FTGP hosts programming at 26 golf courses and driving ranges across its eight county footprint. Utilizing 40 First Tee golf and life skills trained coaches their impact reaches over 1,800 young people. Exhibiting Game Changing Behaviors and practicing Key Commitments has become commonplace for all those who encounter First Tee Greater Philadelphia.

While operating John F. Byrne Golf Club and Walnut Lane Golf Club, FTGP works

tirelessly so that their young people feel at home whenever they walk through the door of their home clubs or another First Tee program location. The mentors, coaches, and staff foster confidence building and more character development through impactful positive relationships.

In addition to experiencing the incredible programming run here across the Greater Philadelphia area, FTGP's students have represented the chapter on a network-wide level at multiple National Opportunities hosted by First Tee HQ. Teens in the program apply for different scholarship opportunities, leadership academies and committees offered by First Tee HQ.

We are so proud of FTGP's work here in Philadelphia and know that we're just getting started.



# MITCHELL PRODUCTS

Specializing in Aggregates for the Sports Turf Industry

Bunker Sands | Topdress Sands | Divot Mixes  
Rootzone Mixes | Stone Products

[MitchellSand.com](http://MitchellSand.com) | 856-327-2005





# PETS OF THE PAGCS

## AND THEN THERE WAS ONE—MEET ASPEN AND ROCKY

These two energized fur balls used to find a way to share space at Union League Torresdale.

**FIRST UP:** On the right is Aspen, a two-year Lab/Fox Hound Mix. Originally named June, she found a more fitting moniker thanks to her owner, Assistant Golf Course Superintendent Max Lyons.

**TO QUOTE MAX:** She is highly spoiled by everyone ... She's an all around crazy puppy. Always has a lot of energy. She chases geese when needed, baby deer, squirrels, and birds. She also has a love-hate relationship with the shop cat.

**FUNNY MOMENT:** There was an open door to the shop one day and Aspen had escaped. One of our employees called me on the radio saying Aspen had walked onto #15 green which isn't even 50 yards from the shop. I ran out to see she had picked up a golfer's ball and was playing with it. The member himself did not think it was funny but his guests were laughing hysterically. I apologized and had to carry her off the green.

**ASPEN HAS TAKEN HER ANTICS TO SUNNY FLORIDA FOR NOW, SO LEFT TO OWN TORRESDALE IS ROCKY:** Originally named Rocket, Rocky is a rescue from Alabama. Union League Head of Grounds Andrew Dooley and his wife shortened his name to Rocky—pretty apt for a Philly pup.

**TO QUOTE ANDREW:** I picked him up in Kennett Square when he was one year old. Rocky is a nine-year-old rat terrier/border collie mix. Rocky enjoys coming to work so he can get treats from a few employees and members. He also loves riding around on my cart watching/chasing the wildlife around the property.

Bet there's a few funny stories to tell about that! Andrew can be reached at [DooleyA@unionleague.org](mailto:DooleyA@unionleague.org)



## SHOW US YOUR PETS

There are a lot of PAGCS pets out there--Please share yours! Next deadline is 11/15. Seems there's no love for shop cats so far...Email [Kliebsch@pagcs.org](mailto:Kliebsch@pagcs.org)



Brian Gjelsvik  
(973) 670-7139  
[briang@noble turf.com](mailto:briang@noble turf.com)

Michael Linkewich  
(267) 688-8900  
[link@noble turf.com](mailto:link@noble turf.com)

Stephen J. Rudich  
(610) 349-9519  
[steve@noble turf.com](mailto:steve@noble turf.com)

Bill Cimochowski  
(609) 923-4045  
[bill@noble turf.com](mailto:bill@noble turf.com)

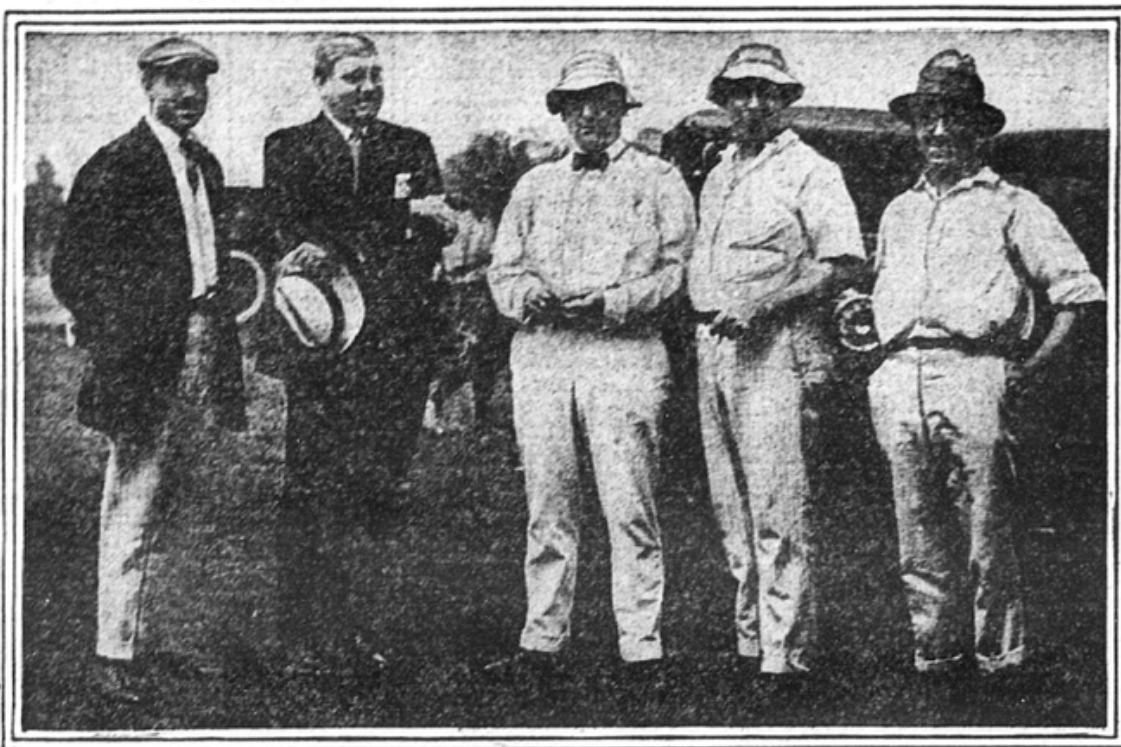
### Connect With Us!

## >> #HEADINGTO100

HERE'S A NICE PHOTO OF THE BALA GOLF CLUB IN THE AUGUST 12, 1916 EDITION OF THE EVENING PUBLIC LEDGER.



HEADQUARTERS OF THE BALA GOLF CLUB  
Where some 150 entrants have been performing in a tournament this week.



HAPPIEST WHEN THEY ARE SIGHTING ACROSS A TEE  
Left to right, Albert C. Alexander, C. J. Corr, A. M. Ehret, Walter Supplee and R. J. Lewis.

credit: Joseph Bausch@jwbausch

## #HEADINGTO100

LOGO CONTEST ANNOUNCEMENT *Contest details to come soon!*

1C  
YEA



A photograph of three men sitting in the foreground of a stadium, likely during a baseball game. They are all wearing red shirts and caps. The man on the left has a beard and is wearing a green cap and sunglasses. The man in the middle is wearing a red cap and sunglasses. The man on the right is wearing a red cap and sunglasses. They are all smiling at the camera. The background shows other spectators in the stands.



## Employee-Owned

- For more information contact John Wiblishauser at 609.774.3310.

PBIGordonTurf.com



**Keep ABW off your course.**

**Superior control. Zero disruptions.**



Nic Mitchell  
nic.mitchell@corteva.com  
267.220.0626

**MatchPoint®**  
INSECTICIDE

**LEARN MORE**



## THIRD AND FINAL GCEP SURVEY LAUNCHED 9/1— YOUR HELP IS NEEDED!

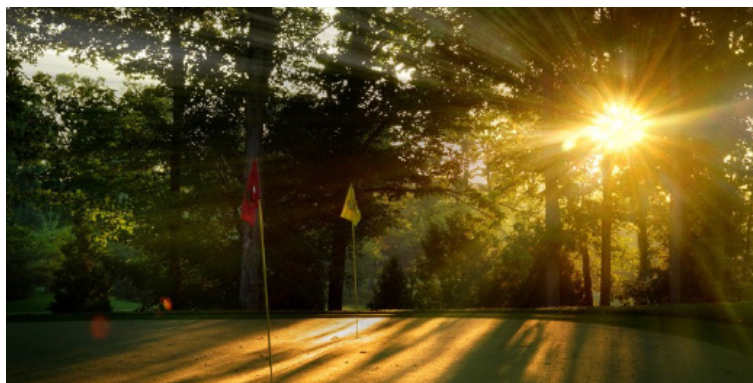
GCSAA has launched the Golf Course Environmental Profile's (GCEP) Property Profile and Environmental Stewardship Practices survey. This is the final survey of the three-part GCEP series.

As you may recall this data is important as it enables us to better advocate for the profession and industry. It helps us answer regulatory inquiries, supports the BMPs, and more. Our targeted date to close the survey is October 17, 2022.

We need all superintendents at different facility types, budget levels, etc. including non-members, to participate and help ensure adequate responses geographically as well.

GCSAA will seek critically needed data from superintendents regarding property profile and environmental practices to support the profession and industry as part of the on-going efforts to maintain necessary golf course management resources.

To collect the data, the Golf Course Environmental Profile survey program will be administered; an in-depth questionnaire will be sent electronically to superintendents at approximately 14,000 facilities.



Since 2006, the data collected has enabled GCSAA to help members succeed and support the golf industry.

Superintendents should look for an email from the National Golf Foundation who is conducting the survey on behalf of the GCSAA or find access on GCSAA's website. ♦

**Lawn and Golf**  
*More Than the Logo!* **supply co. inc.**  
Since 1937.



**JACOBSEN**

**Electric 360 Greens Mower**

- No hydraulics
- Programmable Dynamic FOC
- Swing out center unit

Equip. Sales: Tony Gustaitis CGCS 484-614-0999  
Service: John Kocon 610.933.5801 x 144  
Parts: Tony Mastrangelo 610.933.5801 x 2

[www.lawn-golf.com](http://www.lawn-golf.com)



**Smithco**

**XL 7000  
Greens  
Roller**

Mid Atlantic Exclusive Dealer

**Wiedenmann**  
North America, LLC

**Super 600 Sweeper**

- Fraise & Flail Mower
- Verticutter Collection
- Floating Head follows contours



**Smithco**

**Electric  
Bunker  
Rake**



# NORTHEAST REGIONAL UPDATE

## CUTTING BACK ON FRIED EGGS

*John Daniels, agronomist, Northeast Region • September 16, 2022*

Applying a baseball infield conditioner to bunkers that are prone to drying out can help retain moisture and lessen the likelihood of fried-egg lies.

Bunkers are an integral part of golf courses and are intended to be challenging. Every golfer knows that they are to be avoided if possible. However, there are many differing opinions on the importance of consistency, playability and overall difficulty of bunkers. Regardless of where you might stand on how penal bunkers should be, one thing we can all agree upon is nobody wants frequent fried-egg lies.

Fried-egg lies generally become more prevalent as a bunker sand dries out. The sand in a bunker behaves like sand at the beach. The firmest sand can be found near the water's edge where the tide keeps the sand moist. As you move farther away from the ocean, the sand becomes more dry and less stable. This same principle holds true in bunkers. Periodic rain helps to maintain a certain amount of moisture within the sand and allows them to play firmer, thereby reducing deep footprints and fried-egg lies.

During periods of drought, it is common for bunkers to become less firm. Irrigation priority is given to maintaining turf health, and rightfully so. Many courses barely have enough water to keep the primary playing surfaces from dying during periods of extended drought so applying water specifically for bunker playability is wasteful. Still, there are things that can be done to help make your water go farther and improve your bunkers.

Some golf courses have found success incorporating products originally developed for maintaining the infield skin of baseball and softball fields. Infield conditioners, such as In-Flow from Precision Laboratories, can be applied to



bunkers to help achieve the desired water retention. The Kittansett Club in Marion, Massachusetts, used this product during a challenging two-month stretch where they received no rainfall. A light layer of In-Flow was applied with a fertilizer spreader on bunker slopes. Any irrigation water that was applied to putting greens and fairways that happened to overspray into the bunkers was preserved, resulting in optimal playing conditions and less instances of the dreaded fried-egg lie.

If you find yourself struggling with soft, dry sand in your bunkers and you have already checked sand depth, consider using an infield conditioner to maintain higher moisture levels for longer. ♦

### Northeast Region Agronomists:

Adam Moeller, director, Green Section Education – [amoeller@usga.org](mailto:amoeller@usga.org)

Darin Bevard, senior director, Championship Agronomy – [dbevard@usga.org](mailto:dbevard@usga.org)

Elliott L. Dowling, senior consulting agronomist – [edowling@usga.org](mailto:edowling@usga.org)

John Daniels, agronomist – [jdaniels@usga.org](mailto:jdaniels@usga.org)

[Information on the USGA's Course Consulting Service](#)

[Contact the Green Section Staff](#)



**TURF  
EQUIPMENT**  
AND SUPPLY COMPANY



# GOLF COURSE SOLUTIONS WITH LOCAL SUPPORT

Count on Ventrac and Turf Equipment and Supply Company for innovative products, services, and local support to keep your golf course operation running smoothly.

**TURF EQUIPMENT AND SUPPLY**

[www.turf-equipment.com](http://www.turf-equipment.com)

800-827-3711



# SAVINGS THAT STACK UP

Multipaks offer complementary products in one convenient package.

Save up to 15% by purchasing select Syngenta products in a Multipak. These Multipaks provide leading solutions for optimal turf quality.

Select from

**6**

solutions

Available

**365**

days a year

Supported by

**50**

agronomic programs



Learn more at [GreenCastOnline.com/TurfMultipaks](http://GreenCastOnline.com/TurfMultipaks)

**syngenta®**



@SyngentaTurf #Time4Multipaks

©2021 Syngenta. Important: Always read and follow label instructions. Some products may not be registered for sale or use in all states or counties and/or may have state-specific use requirements. Please check with your local extension service to ensure registration and proper use. Divanem is a Restricted Use Pesticide. Action™, Appear®, Banner Maxx®, Daconil®, Divanem®, GreenCast®, Heritage®, Primo Maxx®, Trimit®, Velista®, the Alliance Frame, the Purpose Icon and the Syngenta logo are trademarks of a Syngenta Group Company. All other trademarks are the property of their respective owners.

®



**TURF  
EQUIPMENT**  
AND SUPPLY COMPANY

**TORO®**

## GOLF COURSE SOLUTIONS WITH LOCAL SUPPORT

Count on Toro and Turf Equipment and Supply Company for innovative products, services, and local support to keep your golf course operation running smoothly.

**TURF EQUIPMENT AND SUPPLY**

[www.turf-equipment.com](http://www.turf-equipment.com)  
800-827-3711

### ADD **TOTAL KNOCKOUT** TO YOUR TOOLBOX

#### **Alucion™ 35 WG**

Insecticide

A broad spectrum, non-restricted use solution for hard-to-control surface feeders from chinch bugs and cutworms to annual bluegrass weevils and nuisance ants.

For more information, visit  
[betterturf.basf.us/products/alucion.html](http://betterturf.basf.us/products/alucion.html)

**■ BASF**

We create chemistry

Always read and follow label directions.  
Alucion is a trademark of BASF.