



The BONNIE GREENSWARD

OUR 99TH SEASON

VOL 24-3

THE LETTER 'A' STANDS FOR

INTRODUCING THE "A" IN STEAM

Janemarie Mckay is a seasoned expert educator in innovation. In parenthesis, that is STEAM [science, technology, engineering, arts, math]. She was instrumental in establishing the relationship between LedgeRock, First Green and Governor Mifflin school district.

Her influence has reached the national level as a teacher liaison to GCSAA's First Green Task Force Group, helping create lesson plans for the future and expand the program.

After leaving the school district Janemarie took her passion for STEAM to Albright College, then expanded it to Alvernia University. She saw the potential of extending innovation to summer school for highschool students, and also for college age students. At Albright, she promoted expanding teaching to the real world and still sees how much golf courses (and clubs) can be used as a teaching tool.

Starting with a four-week event at LedgeRock encompassing all aspects of a club operation and the different opportunities available in a real world industry, Alvernia University has now partnered with Berkshire Country Club for proximity sake and are planning to expand programming with them.

On June 17, I attended an event at Albright to showcase the First Green, along with GCSAA & PAGCS, to all the local school districts and how they can use golf courses

Continued on page 5

THE OTHER "A"

Ain't nobody got time for this! Agreed. Nobody listens anyway, so why bother. Agreed. Until you have been part of National Golf Day and the Day of Service, these are valid sentiments.

For the past two years, a few of us representing the PAGCS have headed to our Capitol to muddle through these very things: why? The team/s representing PA, NJ, and DE are full of members representing the CMA, PGA, GAP. Why NOT the people who make golf possible: the professionals who can speak to the science and technology, the artistry that is a golf course.

IN THIS CASE, A=ADVOCACY

In 2023, a few of us got our first immersion experience into all.the.things:

- Meeting hundreds of advocates from all facets of the industry; realizing how many states send a contingency of superintendents, vendors, chapter executives, turfgrass professionals.
- Navigating the "bowels" of our nation's capital: It is documented on phones and smart watches that this translates to at least 30,000 steps per day—skip the fancy shoes and get used to being searched, removing many things—think TSA on steroids.
- Sharing knowledge, working as a team with others in our cohort,

Continued on page 6

>> UPCOMING EVENTS

GOLF CALENDAR

PAGCS MEMBER-GUEST

September 30

Lookaway Golf Club

Shotgun: 12:30

SUPER-SCRATCH

October 16-17

HVCC and Liberty Hill

MET TOURNAMENT

October 21

WVCC

PAGCS GOLF CHAMPIONSHIP

October 28

Manufacturers' Golf & Country Club

Shotgun: TBD

PRO-SUPERINTENDENT

November 1

Saucon Valley's Old Course

SOCIAL CALENDAR

GCSANJ V. PAGCS ICE HOCKEY GAME AND FAMILY FUN SKATE

December 14

Steel Ice Center, Bethlehem, PA

SOCIAL WITH GCSANJ

February 5

The Deck, San Diego

[Visit the website events tab for more!](#)

#HEADINGTO100 - PAGE 17

As we head to our centennial in 2025, the 100th committee has been hard at work.

Please share your history: pagcs1925@gmail.com



>> OFFICERS

PRESIDENT

Gregory D'Antonio
Concord Country Club
gdantonio@concordclub.org

VICE PRESIDENT

Patrick Michener
Bidermann Golf Club
pmichener@vicmead.com

TREASURER

Tim Edwards
Rivercrest Golf Club
tge@rivercrestgolfclub.com

SECRETARY

Darren Farrar
Whitemarsh Valley Country Club
dfarrar@whitemarshvalleycc.com

PRESIDENT EMERITUS

Doug Rae
Applecross Country Club
doug@applecrosscc.com

>> BOARD MEMBERS

Joe Agnew, Director
The Bucks Club
Jagnew@thebucksclub.com

Brandon Collins
Overbrook Golf Club
Bcollins@overbrookgolfclub.com

Nick Lubold
Sunnybrook Golf Club
NLubold@sunnybrook.org

Matt Rogers
Gulph Mills Golf Club
Mrogers@gulphmillsgc.com

Rich Shilling
Jeffersonville Golf Club
Shilling2pa@yahoo.com

INDUSTRY LIAISON

Bill Corcoran
Ventrac

Mike Kachurak
Shreiner Tree Care

ASSISTANT LIAISON

Nick Sujkowski
Concord Country Club

EQUIPMENT MANAGER LIAISON

Mike Smethurst
Gulph Mills Golf Club
gr8grnx@msn.com

>> PAGCS OFFICE

Kristen Liebsch
Executive Director, Newsletter Editor
484-467-5298
kliebsch@pagcs.org

>> THE PM

A CALL FOR INPUT

Dear PAGCS Members,

I think I speak for many when I say it was great to see summer come to an end. Football season is underway and fall is here. Many Superintendents I have spoken with over the past few weeks consider this to be one of the toughest years in a long time, some rank it top three in their careers. I am sure most are seeing tired staff who are ready for cooler overnight temperatures. On the Affiliate side, I hope everyone has AC in their truck and the positive support you all bring to tired Superintendents is appreciated and doesn't go unnoticed. Whether it is a case of water or just positive words of encouragement to keep grinding, I speak for all Superintendents in saying thank you.



Our yearly Phamily Phun at the Phillies Game sold in August. Whether it was the first-place team or just the desire to get away for an afternoon, it is great to see so many attending and enjoy an afternoon away from work or the golf course. As we turn the page to fall, we have great golf venues planned and hope outing and aeration schedules permit everyone getting away for a fun day of golf and relaxation. If you are still in the match play, get those matches planned as the year will come to a close quickly!

As we look ahead to the winter, if anyone has any ideas for our annual education event, please reach out to me. Topics must be objective in nature and cannot promote any products. I also want to thank the entire board of the PAGCS for volunteering their time this year, especially our new members who have brought fresh ideas for the future of the Association.

Respectfully,

A handwritten signature in black ink that reads "Cory A. Ott". The signature is written in a cursive, flowing style.

President, Philadelphia Association of Golf Course Superintendents



>> PLEASE SUPPORT THOSE WHO SUPPORT US!

PLATINUM

[Pocono Turf](#)
[Turf Equipment](#)
[Plantfood](#)

[Shreiner Tree Care](#)
[Synatek](#)

GOLD

[Arader Tree Service](#)
[Genesis](#)
[Harrell's](#)
[Lebanon Turf](#)
[Lawn & Golf](#)

[Aquatrols](#)
[Ewing Irrigation](#)
[Fisher & Son](#)
[Noble Turf](#)

SILVER

[ENVU](#)
[Mitchell Products](#)
[Aer-Core](#)
[BASF](#)
[John B Ward](#)
[NuFarm](#)
[Total Turf Golf Services](#)
[George E. Ley Company](#)
[SiteOne](#)

[Target Specialty Products](#)
[Helena](#)
[Grass Roots](#)
[Coombs Sod](#)
[Nutrien](#)
[Turf Trade](#)
[Davisson Golf](#)
[Syngenta](#)

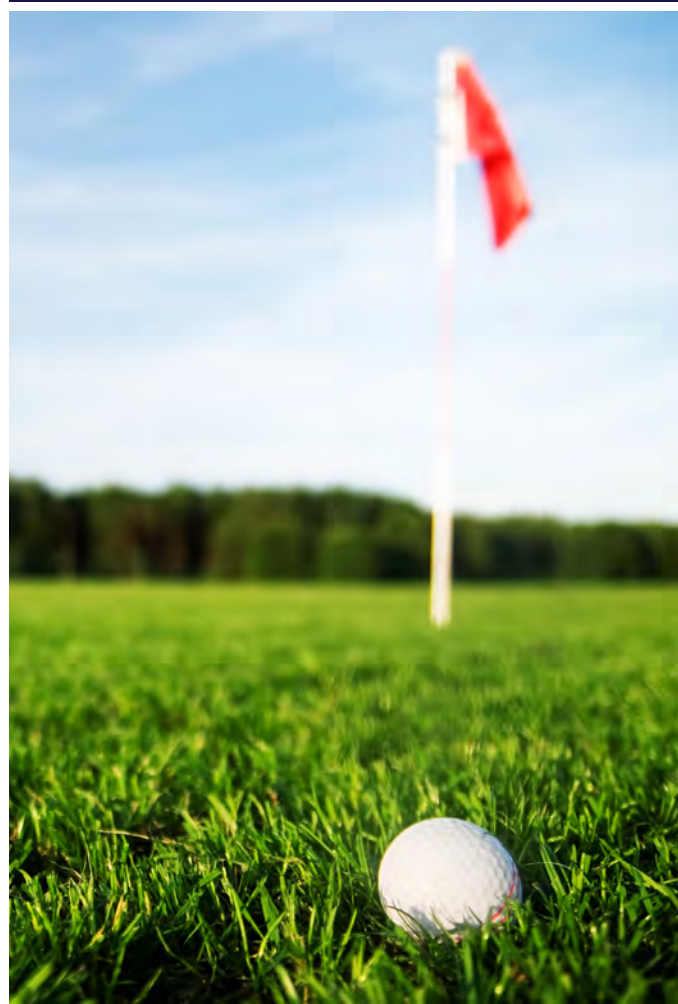
BRONZE

[Finch Turf](#)
[Windview Athletics](#)
[Double D Turf](#)
[Dryject](#)
[East Coast Sod](#)
[PBI Gordon](#)
[FMC](#)

[Corteva](#)
[KM Golf Sales](#)
[Central Sod](#)
[First Turf and Ornamental](#)
[American Golf Grading](#)
[Sox Erosion](#)

>> ISSUE GUIDE

FIRST TEE	4
FIRST GREEN.....	5-7
ASSISTANT'S CORNER.....	10
UNIVERSITIES	11-12
LABOR & CAREER	15
HEADING TO 100.....	17
EVENTS	21-22
PARTNER/SPONSOR.....	23-24
USGA	25
GAP	26



PENNSYLVANIA URBAN NUTRIENT MANAGEMENT – BE GREEN WHILE PROTECTING OUR STREAMS



CLEAN STREAMS START AT THE FIRST TEE

As we step up to the first tee box and look out over lush fairways and pristine water features, we visualize the hole-in-one that will earn us eternal bragging rights. For many of us, a day at the course is not just about shooting the perfect game, but about enjoying time

with friends on a beautiful, green backdrop of well-manicured fairways and putting greens.

For the 600-plus golf courses in Pennsylvania, selecting and implementing an appropriate turfgrass management program to promote eye-catching fairways and smooth, reliable greens is not only essential to golf course success, but is also important to protecting our waterways.

TAKE THE RIGHT APPROACH

Pennsylvania’s 2022 Fertilizer Law amendments were developed to save Pennsylvania waterways and the waterways downstream. As a bonus, following the limitations in the law will boost your bottom line by ensuring that your investment doesn’t wash away. The 2022 law established the following nitrogen and phosphorus limits for turf fertilizer applications.

- Nitrogen is limited to 0.9 pounds of total nitrogen and 0.7 pounds of available nitrogen per 1000 ft² per application.
- No phosphorus can be applied unless establishing or repairing turf.
- Nitrogen and phosphorus rates can be adjusted based on soil test recommendations and/or if using an enhanced-efficiency fertilizer.

In addition to the nutrient limitations, the law also established application parameters to prevent direct movement of fertilizer nutrients into our streams:

- Do not apply fertilizer if a heavy rain event is expected.

- Keep fertilizer away from drainage ditches, storm drains, or water.
 - Maintain a 15-foot buffer from the banks of all waterways.
- Remove fertilizer that lands on impervious surfaces (driveways, sidewalks, roads, parking lots).
- Do not use as a snow or ice melt.
- Do not spread fertilizer on snow-covered or frozen ground.
- Limit fertilizer application between December 15 and March 1 to 0.50 lbs of total nitrogen per 1000 ft² per application.

KNOW WHAT’S BEST, SOIL TEST

Selecting the right fertilizer requires an understanding of what your turf really needs to be lush, healthy, and green. It is important to conduct regular soil tests to determine nutrient deficiencies that should guide fertilizer selection and application. Soil test kits can be purchased for a nominal fee from your local [Penn State Extension office](#).

Following soil test recommendations, following fertilizer label instructions, and using a properly calibrated spreader will ensure the right amount of nitrogen, phosphorus, and potassium are applied, while reducing nutrient loss and fertilizer cost.

IT’S PAR FOR THE COURSE

What works at the golf course also works at home. Just remember that homeowners must also play by the same rules as the groundkeepers. Whether it is a golf green, sports field, or home lawn, everyone who applies turf fertilizer is now required to follow the same established nutrient and environmental restrictions.

WORKING TOGETHER FOR CLEAN WATER

With more than two million acres of managed turf in Pennsylvania, controlling what goes into PA waterways is ALL of our responsibility. Help protect Pennsylvania’s waterways by being wise when you fertilize!

For more information on the Pennsylvania Fertilizer Law, visit the Department of Agriculture’s website at agriculture.pa.gov/fertilizer or contact Denise Uzupis at duzupis@pa.gov.

Continued from front cover

INTRODUCING THE “A” IN STEAM



Alan Fitzgerald, right, with Ryan Kraushofer, CGCS at Westminster National in Maryland and one of the original First Green Liaisons, during the First Green event at Langston, held in tandem with the Day of Service during National Golf Week events.

in their STEAM lesson plans. Leann Cooper, GCSAA’s Director of First Green and Workforce Development, joined us via video link. Together, we spent 90 minutes providing all the key information.

Attendees were fascinated with how much a First Green event can offer, how it shows students to apply their STEAM education in real world settings and career paths. I have already spoken with a few of the teachers about hosting their own First Green Events – I’m looking forward to expanding the program, not just in PA but also at Rehoboth Beach Country Club this fall.

Alan Fitzgerald is CGCS at Rehoboth Beach Country Club, formerly GCS at Ledgerock Golf Club; and the regional First Green Liaison: he can be reached at

superintendent@rehobothbeachcc.com

Upcoming First Green Events

- **Monday, October 7: Berkshire Country Club Reading**
- **Monday, October 14: Kennett Square Golf and Country Club**
- **Tuesday, October 22: Ledgerock Golf Club**

Continued from front cover

THE OTHER "A"

dividing and conquering with a plan of who speaks to what issue, learning the issues at hand and how to speak to them, realizing you are making a difference.

The experience lends itself to drawing you in and wanting to encourage more to participate—this is a CULTivar of professionals who radiate passion, experience, and knowledge.

Returning in 2024, the PAGCS added a new advocate to the PA team—the daughter of an industry pro! The main issues at hand:

- Health: advocating for passage of the PHIT bill [HR1582, S786]
- Tax Bill: remove golf from the IRS "sin" list
- 2024 Farm Bill: keep golf, add resources

TRAINING. TEAMWORK. EDUCATION.

No one is left alone to flounder: One of the requirements is to attend the training session the afternoon before. This is when participants meet others from the state team and are informed of the advocacy initiatives, how to address them, and how to do it. The state teams then have time to collaborate and choose who will speak to which initiative.

We visit the offices of every Representative and Senator in our state. Again, choose your attire accordingly for the labyrinths that are the Capital buildings. We gain courage meeting after meeting and year over year.

Can we please get a few more agronomy professionals on the team!?

"DESPITE DECADES IN THIS INDUSTRY, ENDING UP THE ONLY ONE ON THE PA TEAM AVAILABLE TO SPEAK ABOUT AGRONOMY AND 2024 FARM BILL ON BEHALF OF THE STATE OF PA FELT SURREAL. AT LEAST THIS WAS NOT MY FIRST CAPITOL HILL VISIT."

-KEL

"IT CAN FEEL INTIMIDATING AND OVERWHELMING IN THE BEGINNING, BUT ONCE YOU FIND YOUR VOICE, IT STARTS TO COME NATURAL. UNTIL: THE PA TEAM HAD TO DIVIDE AND CONQUER SO THAT THE OFFICES OF KEY LEGISLATORS FROM DE AND NJ WERE COVERED."

DAY OF SERVICE

New in 2024, volunteers were given a choice of the historied day of service on the Capital Mall or head out to Langston [NLT] to introduce First Green STEAM education to the local community. Some of us chose First Green and others the Mall.

CALL TO ACTION

No one in the golf turf industry is bored in May, and ain't none of us got time for this. But if we don't do this, we lose: as the sayings go, if we don't have a seat at the table, we are on the menu; if we don't speak, someone else speaks for us. Worse that can happen, you get to see the Capital with credentials, learn new things, network with colleagues from across the country, and other amenities.

May 2025 will be here before we know it: <https://www.gcsaa.org/advocacy/get-involved/national-golf-day>





This past May, I had the privilege of attending National Golf Day with my daughter, Nora, and it was an unforgettable experience! It was a unique opportunity for us to bond over a shared interest while learning about the broader impact of golf on our communities. We had the chance to engage in meaningful conversations with members of Congress, advocating for the vast contributions the golf industry offers to the well-being of our communities and the economy. Later, we joined others in a community service event, planting trees at the George Mason Memorial. The event culminated in a reception that brought together industry members and leaders, all equally enthusiastic about supporting the future of golf. Sharing this experience with Nora made it all the more special, and I look forward to National Golf Day 2025!

–Michael Janzer & Nora Janzer





The Best Conditions Require The Best Partners

Your Exclusive Rain Bird® Golf Supplier



Your Ewing Golf Go-To Guys

Rick Shriver
Mid-Atlantic Regional Golf Sales Manager
rshriver@ewingos.com
240-243-8516

Brian Kealy
Northeast Golf Account Manager
bkealy@ewingos.com
856-410-7840

Matt Schifano
Northeast Golf Account Manager
mschifano@ewingos.com
570-430-0359

Brian Reardon
Northeast Golf Service
breardon@ewingos.com
717-371-8667



Scan the QR code to download our Golf Catalog

EwingOutdoorSupply.com

LEAN ON US

YOU MAKE THE LIST, WE'LL CHECK THE BOXES.

- divot mix*
- fertilizer*
- seed*
- arbor solutions*
- erosion control*
- mulch + compost*
- disease control*
- bunker sand*
- soil testing*
- tools + accessories*
- topdressing*
- aquatic solutions*



JUST ASK A GENESIS TEAM MEMBER

Ben Brace
570.472.1248 \ bbrace@genesisgreensupply.com

Tom Currie
484.844.5214 \ tc@genesisgreensupply.com

Tom Defino
302.354.2840 \ tom@d@genesisgreensupply.com

WWW.GENESISGREENSUPPLY.COM | 717-759-8151

**Follow Us: tweet/@genesisturf
fb/genesisgreensupply insta/@genesisturfgrass**

"SERVING THE TURFGRASS PROFESSIONAL SINCE 1978"



WE PRIDE OURSELVES IN

- CUSTOMER SERVICE
- TECHNICAL SUPPORT
- QUALITY PRODUCTS



GRASS ROOTS TURF PRODUCTS

4 Middlebury Boulevard, Suite 7
Randolph, NJ, 07869

973-252-6634 • sales@griturf.com

www.griturf.com

**THE MOST ADVANCED
TURF MANAGEMENT
PROGRAM IN THE
MARKET**



The forces impacting your grounds' health are interconnected, which is why each Rx360 product is designed to work hand-in hand with others to provide more valuable data than any one product can on its own. When combined with expert advice from your Helena representative, Rx360 is designed to maximize profits by helping you make more efficient, fact-based decisions throughout the season, with a payoff of reaching your goals and producing a higher return on your investment.

Contact your
Local Helena
Representative
Today

Conor Geisel
Phila Area
609-980-9355
GeiselC@HelenaAgri.com

Marc Prosser
Wilmington Area
570-449-9926
ProsserM@HelenaAgri.com

ACCUPOINT®

- » Nutrient Sampling
- » Site Monitoring
- » Record Management

PREVEAL®

- » Precision Imagery to Identify Site Variance
- » Targeted Tissue Sampling
- » Custom Management Recommendations

EXTRACTOR®

- » Strong Principle Based Tissue Recommendation
- » Recommendations Created and Supported Using Local Expert Knowledge
- » Quality Lab Processing

AQUALENZ®

- » ADVANCED WATER ANALYSIS
- » Precision Water Sampling
- » Quality Sample Processing
- » Custom Recommendation Built Around Your Source to Maximize Potential and Efficacy



Rx360, Preveal, Accupoint, Extractor, Aqualenz & Preval - Products, Knowledge, are registered trademarks of Helena Holding Company. Always read and follow directions. © 2021 Helena Holding Company.



**KMGOLFSALES PROUDLY REPRESENTING
CUTTER & BUCK/CLIQUE APPAREL
AND AHEAD HEADWEAR**



KEVIN MCCLELLAN

215-519-0837 • KMGOLFSALES@OUTLOOK.COM

**A NEW MODE OF ACTION ONLY
HAPPENS ONCE IN A BLUE MOON.**

An entirely new mode of action for the control of pythium diseases. **Believe it.**



Always read and follow all label directions, precautions, and restrictions for use. Some products may not be registered for sale or use in all states. FMC, the FMC logo, and Serata are trademarks of FMC Corporation or an affiliate.

**ONE SYSTEM.
ENDLESS
POSSIBILITIES**



Makita's purpose-built motors, battery technology, and enhanced communications work together to deliver unmatched power, speed, and run time. Get maximum performance and efficiency with LXT Products.



A TRICKY SUMMER FOR LONG TERM PROJECTS

by Nick Sujkowski, PAGCS Assistant Representative to the Board

I recently visited with the team at Chester Valley Golf Club to check out all the projects they had in store. Not only are they maintaining pristine playing conditions on 18 holes through a brutal Philadelphia summer, but doing so with a new irrigation system going in and a short course to follow.

The team at CVGC is doing a fantastic job keeping up with a busy golf schedule while simultaneously installing new irrigation around an existing system, which is no small task. Main lines for the new system went in earlier this spring and they have now moved to pulling the remaining lines down the fairway.

Closing one hole at a time, the team with Landscapes Unlimited is able to complete a hole at a time in about two or three days before turning it back over to the CVGC team. This includes pulling or trenching all new pipe and wire, removing and replacing sod where needed and removing all old irrigation heads. Working around an existing irrigation system can be a challenge especially given the tough summer we have had in the Philadelphia region. The team at CVGC is making it look easy, however, with some help from Brian Kealy and the team at Ewing Irrigation.

The new irrigation project should be completed around December 2024 at which point the course will be turned back over to the members. Irrigation is never an easy sell but I'm sure the members will be thrilled to see this project completed with such precision.

The new irrigation system finishes just in time for the new Short Course to begin. Slated to begin in early September, Landscapes Unlimited will move over to an eight acre portion of the property to begin a six hole short course. The short course includes six USGA greens and three teeing areas designed by Jim Nagle of Nagle Design Works, LLC. This new short course will be an exciting addition to the club but will also be an added challenge to the Chester Valley agronomy team as they will now have more to manage; a challenge I am sure they are well-equipped for.

The team at Chester Valley Golf Club is doing an outstanding job managing so much on their plate this summer and it would not be made possible without their talented team of turf professionals including: Derek Mohler (Golf Course Superintendent), James Bromwell (Lead Assistant Superintendent), Michael Dudas (Assistant Superintendent), Jack Whitney (Assistant Superintendent), Nick Mattia (Assistant-In-Training), and Jay Clymer (Intern).



From left to right: Nick Mattia, Jay Clymer, Declan Coates, Jack Whitney, James Bromwell, Mike Dudas Front row: Ellie Bromwell

ASSISTANT'S CORNER

Got any cool projects or stories to share in 2024? We want to hear from you!
Contact Nick: nicksuj@gmail.com

LESSONS FROM THE FIELD



In an effort to immerse students in golf course agronomy and real time maintenance, Dr. Linde, arranges field trips to visit superintendents at their courses throughout the academic year. One such example is a morning spent with PAGCS Board Member Joe Agnew, GCS at The Bucks Club.

The goal for this trip, along with one that took place a week later [more on that in

the next issue], was to compare agronomic practices across a public versus a private facility.

Some Key Areas of Exploration:

- Witnessing live the ins and outs of a GPS sprayer AND learning the savvy navigating and negotiations to acquire it within budget
- Highlighting the different agronomic practices, in particular aeration, mow heights, moisture levels, employed at a public facility, based on the end user—knowing your customer
- Identifying different grasses across mixed settings; learn the different playing surfaces and important golf course features
- Bonus: watching a crew contracted from Total Turf Golf Services'

Pennink Arrimour division build a retaining wall on the course

- Tour the maintenance facility to understand basic layout: equipment maintenance and repair, inventory of machinery and chemicals/ fertilizers, etc.

Check back next issue for more on this and the visit to a private facility.



TESTAMENT TO THE TRIPS

ELEVATE THE EXPERIENCE

from the tee to the green

Specialized Turfgrass Services

- Top Dressing
- Sandmaster Drainage
- Drill & Fill
- Deep Tine (Solid & Coring)
- Traditional Shallow Coring
- Fairway Aeration with Clean-Up

Office: 610-327-3390
1486 S. Hanover St. • Pottstown, PA 19465
www.aer-core.com

Bill Mast
Cell: 610-608-8319
bmast@aer-core.com

Steve Thompson
Cell: 610-972-5933
sthompson@aer-core.com

INTEGRITY . QUALITY . SAFETY . CARE

Helping to make golf better in Philadelphia since '93!"

7th Hole
Aronimink Golf Club
Master Plan Restoration Completed May 2018
Hanse Golf Design

THE DELVAL DIFFERENCE—STUDENTS EXPERIENCE MULTIPLE TURF MANAGEMENT CULTURES



Field trips are one of my most important teaching methods to use in My DelVal Turf classes. I take five or six trips per semester. The students and I both love getting away from the screens and meeting Turf professionals and seeing the areas they manage and the equipment they use.

The second Turf class called **Turf Cultural Systems** is always offered in the spring semester and I like to contrast public golf course maintenance with private golf course maintenance. This past spring, we went to The Bucks Club, run by Joe Agnew, and Philadelphia Cricket Club, run by Dan Meersman to compare private and public course maintenance.

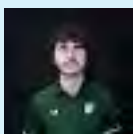
Simply touring the maintenance facility and walking across a golf hole, students can see the difference between courses. I eventually asked the students to reflect on what type of golf course they would want to run as a superintendent.

Besides getting a tour on these trips, I like to arrange with the superintendent to do some equipment demonstrations. This year at the Bucks Club, Joe Agnew demonstrated on how to use his GPS sprayer. I also brought my stimp meters and had the students learn how to use one. At PCC, Rob Moulds showed us how the crew uses their robotic mowers, and one of his interns demonstrated the USGA golf ball.

One of the last things I ask on all our field trips is for the superintendent to speak about work opportunities and then also give the class advice on how to advance themselves in a career on a golf course. During our next scheduled lecture class, I have the students reflect on the field trip and ask them if they were surprised about something they heard or if they needed more information. Today's college student needs inspiration much more than information and field trips and their hosts are giving that inspiration.

PRIVATE PERSPECTIVE

Immediately pulling up to Philly Cricket Club was ... exciting because the quality of the grounds and things around were more manicured than the Bucks Club. This is to be expected: the trip to Cricket was engaging – being shown what goes into keeping a high-quality golf course ... we got to see how the rough around all of Cricket's three courses are mown with new robot mowers that have charging stations all around the property. You can tell the difference in budgets and attention to detail at a private club because their golf course can be maintained with higher-quality equipment, materials, and money to sustain all of these expensive parts of the golf course industry.



Lucas Baldinger, DelVal Turf Student—Class of 2025

Lucas can be reached at lucasbaldinger10@gmail.com



**TURF
EQUIPMENT**
AND SUPPLY COMPANY



GOLF COURSE SOLUTIONS WITH LOCAL SUPPORT

Count on Ventrac and Turf Equipment and Supply Company for innovative products, services, and local support to keep your golf course operation running smoothly.

TURF EQUIPMENT AND SUPPLY

www.turf-equipment.com

800-827-3711

UPGRADE
YOUR NUTRITION



ELE-MAX[®]
Phosphite MAX 0-0-30



Conor Geisel
Sales Representative
609-980-9355

Important: Always read and follow label instructions. Some products may not be registered for sale or use in all states and countries. Please check with your Helena representative to ensure registration status. Helena and Ele-Max are registered trademarks of Helena Holding Company. © 2023 Helena Holding Company. HPG0421P



**NEXT BONNIE
NEWSLETTER DEADLINE
OCTOBER 15, 2024**

Lawn and Golf  **supply co. inc.**
More Than the Logo!
Since 1937.

Equip. Sales: Tony Gustaitis CGCS 484-614-0999
Service: John Kocon 610.933.5801 x 144
Parts: Tony Mastrangelo 610.933.5801 x 2

www.lawn-golf.com



Electric 360 Greens Mower
- No hydraulics
- Programmable Dynamic FOC
- Swing out center unit



Smithco
XL 7000
Greens
Roller

Mid Atlantic Exclusive Dealer



Super 600 Sweeper
- Fraise & Flail Mower
- Verticutter Collection
- Floating Head follows contours



Smithco
Electric
Bunker
Rake

Another segment in the Association's efforts to address much needed career and labor resources for our members.

CHECK OUT THIS PODCAST FEATURING PAGCS VICE PRESIDENT

"Powerful Ways to Set Yourself Apart as a Superintendent with Patrick Michener"

What sets good superintendents apart from great ones is their business ability. The most successful superintendents bring a higher-level thought process to their leaders, club members, and team. Patrick Michener shares how you can become that irreplaceable leader.

[CLICK HERE](#)



GOLF SAFETY
A RISK COMPLIANCE COMPANY

Tony Gustaitis, CGCS
Toll Free: (800) 965-8414 • MOBILE: 484-614-0999
Tonygus@comcast.net • www.GolfSafety.com
9006 Trolley Lane, Eagleville, PA 19403

 @GOLFCOURSESAFETY  @GOLF_SAFETY

BUILDING A SAFER WORKPLACE FOR THE GOLF INDUSTRY



**Providing Services & Solutions to the
Golf & Sports Turf Industries**

SERVICES

Fraze Mowing	Deep Tine Aeration
Sandmaster Drainage	Debris Management
Field Renovation	Slit Seeding
Fertilizing	Spraying
Solid Tine & Core Aeration	Topdressing
Verticutting	Infield Preparation

CONNECT WITH US:
 Windview Athletic Fields
 @Windviewinc

www.windviewathleticfields.com | chris@windviewathleticfields.com | 610-608-3175
1325 Goshen Parkway | West Chester, Pa 19380



**Firm and Fast.
We Can Help With That.**



**AERATION SERVICES
EQUIPMENT RENTALS
PRODUCT SALES**

DoubleDTurf.com



**First Turf
& Ornamental**
www.ftodistributors.com

J.T. Latshaw
Sales Representative PA, NJ, DE

3349 Monroe Avenue, Suite 290, Rochester, NY 14618
614-499-2311 | JT@ftodistributors.com

Aerate and Amend Without Cores
18 Greens per Day, Ready for Quality Rounds the Next Day



DryJect.com • 800-270-8873




*Aerate, amend,
play next day*

 Search DryJect  DryJect Technologies  @DryJect

AMERICAN GOLF GRADING

At AGG, we offer precision grading at an affordable price. We specialize in precision laser grading for golf courses, athletic fields and any other area where precision is desired.

856-905-3044
glen@littlemill.com



<https://www.linkedin.com/in/glen-van-istendal-0b03411b/>

THE YEAR WAS 1963 WHEN I JOINED
THE PAGCS. PAUL WELLS SR. AND
EB STEININGER ARE TWO MEMBERS
THAT GREETED ME.

I MET MANY OLDTIMERS BACK THEN.
NOW ON AUG. 3RD I WILL BE

92 YEARS OLD. I GUESS THAT
MAKES ME AN "OLDTIMER"

I ENJOYED MY CAREER AS A
GOLF COURSE SUPERINTENDENT.
MET MANY GREAT PEOPLE.
ALONG THE WAY

I THANK THE LORD - FOR ALL HE
HAS DONE FOR ME.

JOHN A. SEQUI



Always read and follow label directions.
Alucion is a trademark of BASF.

ADD **TOTAL KNOCKOUT** TO YOUR TOOLBOX

Alucion™ 35 WG

Insecticide

A broad spectrum, non-restricted use solution for hard-to-control surface feeders from chinch bugs and cutworms to annual bluegrass weevils and nuisance ants.



For more information, visit
betterturf.basf.us/products/alucion.html



**UPDATED NAME AND LOGO,
BUT THE SAME GREAT SERVICE!**



**Your go-to supplier for fertilizer,
biological, and sand products.**

Turfmanbrad@gmail.com • 410-236-2069



LebanonTurf

LEARN MORE AT LEBANONTURF.COM
OR CALL 1-800-233-0628

COUNTRY CLUB GREENS
GRADE PRODUCTS DELIVER

SUPERIOR SEASON-LONG PUTTING GREEN PERFORMANCE

No matter what putting green maintenance goals are in place, Country Club has products dedicated to fit every agronomic situation. All are designed specifically for use on putting greens, and have been developed to provide superior turf quality and golf course playability.



Country Club^{IV}



Country Club^{MD}



Country Club^{Natural}

SAVINGS THAT STACK UP

Multipaks offer complementary products in one convenient package.

Save up to 16% by purchasing select Syngenta products in a Multipak. These Multipaks provide leading solutions for optimal turf quality.

Select from	Available	Supported by
6 solutions	365 days a year	50 agronomic programs



Learn more at GreenCastOnline.com/TurfMultipaks

syngenta

Facebook, Twitter, YouTube icons | @SyngentaTurf #Time4Multipaks

©2021 Syngenta. Important: Always read and follow label instructions. Some products may not be registered for sale or use in all states or countries and/or may have state-specific use requirements. Please check with your local extension service to ensure registration and proper use. Divanem is a Restricted Use Pesticide. Action™, Appour™, Banner Maxx™, Decolif™, Divanem™, GreenQuest™, Heritage™, Pliant Maxx™, Tirmex™, Veltax™, the Alliance Frame, the Purpose Icon and the Syngenta logo are trademarks of a Syngenta Group Company. All other trademarks are the property of their respective owners.

RESULTS WORTH THE SWITCH

Anuew™

3 REASONS ANUEW™ PGR PERFORMS BETTER ON BENTGRASS
- TRIAL PERFORMANCE VS THE COMPETITION -

Long-lasting and more active at lower application rates

Only late-stage inhibitor to evenly regulate Poa in mixed stands

Fast improvement of turfgrass density and appearance

/ SEE RESULTS AT NUFARM.COM/USTURF

ASK YOUR REP HOW ANUEW PERFORMS BETTER ON RYEGRASS, POA AND BERMUDAGRASS, TOO.

©2020 Nufarm. Anuew™ is a trademark of Nufarm.

Nufarm
Grow a better tomorrow



Connect With Us!

Brian Gjelsvik
(973) 670-7139
briang@nobleturf.com

Michael Linkewich
(267) 688-8900
link@nobleturf.com

Stephen J. Rudich
(610) 349-9519
steve@nobleturf.com

Bill Cimochofski
(609) 923-4045
billc@nobleturf.com



Pocono Turf – What You Need, When You Need It!

Chris Friel
215-429-8084

Chris Zelley
732-580-2683

Matt Paulina
610-883-6108

Scott May
215-307-7712

Office
215-582-5545

www.poconoturf.com

Don't just follow contours. Own them.

2700/2750 PrecisionCut™/E-Cut™ Triplex Mowers



www.finchinc.com

@finchturf

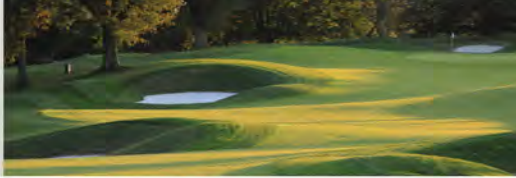
East Coast

S O D & S E E D



KEVIN DRISCOLL

C: 609-760-4099 • O: 856-769-9555
 F: 609-561-5384
 KDriscoll@EastCoastSod.com
 596 Pointers Auburn Rd, Pilesgrove, NJ 08098
EastCoastSod.com



Keep ABW off your course.

Superior control. Zero disruptions.

MatchPoint®

INSECTICIDE

LEARN MORE



Nic Mitchell
 nic.mitchell@corveva.com
 267.220.0626



Employee-Owned

► For more information contact
 John Wiblishauser at 609.774.3310.

PBIGordonTurf.com

GREENS-GRADE FERTILIZER



INCREASED VISIBILITY

Country Club® IV

Increased Visibility

Country Club IV (Increased Visibility), the latest premium greens grade products from LebanonTurf that have been specifically designed with lighter color granules to help ensure more accurate and effective fertilization.

COUNTRY CLUB IV PRODUCTS

- 0-0-25 SOP 2% Fe 2% Mg 2% Mn
- 17-0-17 50% Meth-Ex SOP 1% Fe .5% Mn

SCHOLARSHIP

This event was made possible in partnership with the following:

Pocono Turf
along with

Aquatrols
Noble Turf
Ewing Irrigation
Harrells
Finch Turf
Grass Roots
Lebanon

And PAGCS Scholarship
founders:
George E. Ley Company/
Eastern Irrigation

First up, thank you to Alex Lennertz and Sandy Run Country Club for hosting this event the past four years. Your support has enabled the PAGCS to further build and expand the scholarship program.



SCHOL SHOW UP



The Show-Ups! We all lost the bet that these two would actually show up the day after the final round of the US Women's Open—Nate Schell and Matt Wolfe flanked by two of their most adoring fans.



PAGCS PHAMILY PHUN AT THE PHILLIES

It might have been a real feel of 96 degrees hot on August 28, but the Phillies were not. No matter, the PAGCS knows how to have fun in the face of obstacles. Thank you to all who showed up despite the heat and logistics. It is always a highlight of the yearly calendar no matter what happens. Bring on Red October!

This event was made possible by these partners

Turf Trade
Shreiner Tree Care
Plantfood



Eastern Shorelines is humbly ecstatic to join the PAGCS and provide erosion control solutions on golf courses across the greater Philadelphia area.

A team with local roots and decades of combined construction and erosion control experience, Eastern Shorelines is proud to support the Golf Course Superintendents and turfgrass management professionals of the region.

Our focus is on innovative erosion control systems and techniques that support the natural functionality of the landscape and provide long-lasting solutions.

We look forward to making a positive impact and contributing to the continued long-term success of the PAGCS!

Tom Monzo
Eastern Shorelines LLC
Easternshorelines.com
610-331-2411



EASTERN
SHORELINES LLC

Pond / Stream / Lake
Shoreline Erosion
Restoration

610-331-2411
tom@easternshorelines.com



NEXT BONNIE NEWSLETTER DEADLINE
OCTOBER 15

PLEASE SUBMIT CONTENT TO: KLIEBSCH@PAGCS.ORG

BEECH LEAF DISEASE—START PLANNING NOW

Beech Leaf Disease (BLD) is emerging as the biggest threat to our trees since Emerald Ash Borer. BLD is a relatively new disease of native and European beech trees. It was first described in Ohio in 2012. Since then, it has moved north and east, and was found in all counties in southeastern Pennsylvania in 2022. John B. Ward Arborists confirmed our own findings earlier this spring in Penn Valley.

It appears to be caused by a nematode (roundworm) that lives in the leaf buds and leaves, causing leaf banding, leaf and bud death and eventual death of the host tree. The disease affects all species of beech and is capable of killing a mature tree in 6-10 years.

There are treatment options to help manage Beech Leaf Disease. Right now, we are encouraging our clients to reach out to us to make an appointment for us to inventory your beech trees and discuss what option is the most pragmatic.

Our outlook on the Beech Leaf Disease is that this could potentially be a repeat of what we experienced with the ash trees—where only specimens or small groups of trees could be candidates for preservation.

It is extremely important to remember that we are still early in

the research for treatment options. Six months into the future could hopefully yield more promising options. All we can do is be proactive with what treatment options we presently have available.

We are hopeful that this will not turn out to be another episode of the Emerald Ash Borer. Stay tuned for more updates as they come available.

This article was written by PAGCS member John Verbrugge, Certified Arborist and Delaware Valley University alumnus with John B. Ward & Co. Arborists

Founded in 1957, John B. Ward & Co. Arborists is a family owned and operated TCIA Accredited tree care company located in King of Prussia. We are proud to support the PAGCS members with our industry expertise.



CARING FOR THE MAIN LINE'S CANOPY SINCE 1957

- ✔ LARGE TREE PRUNING
- ✔ ORNAMENTAL PRUNING
- ✔ INSECT & DISEASE CONTROL
- ✔ TREE REMOVAL
- ✔ FERTILIZATION
- ✔ PLANT HEALTH CARE

Contact Us ☎ 610.525.1562
www.johnward.com

PO BOX 280, BRYN MAWR, PA 19010

Fast Play Every Season
WITH WOODY'S
REMOVE & RECYCLE SERVICES

- LARGE BRUSH PILE AND DEBRIS REMOVAL
- ONSITE GRINDING AVAILABLE
- NO JOB TOO BIG - LARGE CONTAINER TRUCKS AVAILABLE

Premium Wholesale
MULCH DELIVERIES

- DELIVERIES TO COUNTRY CLUBS AND COURSES
- 65 YARD / TRACTOR TRAILER LOADS AVAILABLE

Call us **610-337-1863**
woodysrecycling.com

LOCAL PICKUPS & DELIVERIES

Open Monday-Saturday, 7am - 5pm
453 CROOKED LANE | KING OF PRUSSIA, PA

ACCURATE IDENTIFICATION ALLOWS FOR AN EFFECTIVE RESPONSE

July 19, 2024 | By Brian Gietka, agronomist, East Region



Turfgrass diagnostic labs have the equipment and expertise needed to quickly figure out what disease you're dealing with, so you can address the problem as soon as possible.

Many areas of the Northeast have seen higher-than-normal temperatures over the past several weeks. During July and August, it's common to experience weeks of stressful weather, but this year the high temperatures settled in early. High humidity and isolated severe storms were also an issue. High temperatures, high humidity and heavy rainfall is not a good recipe for turf health. Recently in

my travels, a plethora of diseases and maladies have been observed including anthracnose, brown patch, dollar spot, Pythium, leaf spot and more. Not all fungicides give complete control, even if the disease is on the label, so multiple applications and rotating chemistries may be necessary along with prioritizing plant health over optimal playability. An excellent resource to navigate the efficacy of fungicides on different diseases is "[Chemical Control of Turfgrass Diseases 2024.](#)"

If you're not sure which pathogen or pathogens are causing an issue, a turfgrass diagnostic lab can help. Each lab has recommendations on how to take, package and send samples, so be sure to follow instructions prior to collecting the sample. For the best chance of an accurate pest identification, take samples before making plant protectant applications. The technicians in the lab likely won't know anything about

your golf course, so help them with diagnosis by including information about recent cultural practices, environmental conditions, location of sample and any other information associated with the problem. Photographs and other clues that can point lab techs in the right direction are also helpful. There are many turfgrass diagnostic labs throughout the Northeast and across the country. For a listing of university-based plant diagnostic labs in the U.S., visit the [National Plant Diagnostic Network](#) website.

Keep in mind that it is common for no pathogens to be found in a sample of damaged turf. This typically indicates that the turf is simply weak and struggling to survive the environmental stresses of summer. If pushing your turf too hard is the root of your problems, implementing [more-conservative maintenance practices](#) and knowing what not to do will help you successfully navigate this stressful summer.

JUST A WHISKER TOO SHALLOW

September 06, 2024 | By Elliott L. Dowling, regional director, East Region

came across a good way to monitor sand depth on a [USGA Course Consulting Service](#) visit in Canada this week. The course is renovating everything, including bunkers. They chose a porous aggregate liner and manufactured sand to improve playability, maintenance efficiency and aesthetics. Of course, they want to protect their investment to the fullest.

Part of their strategy for doing so is using marking whiskers, sometimes called trail chasers or stake chasers, spaced throughout the bunker floors 1 inch below the desired sand depth. These are a guide for the maintenance team to alert them if sand gets shallow in any area. If



Installing "whiskers" in the bunker floors is an easy and effective way to monitor sand depth. a whisker becomes visible in the sand, this tells you to add an inch to maintain a consistent depth. Whiskers are perfect for this because they are soft and pliable so if they were to get struck by a club during

a shot or hit with a mechanical rake, they will bend but not break. Fellow USGA agronomist Cory Isom [wrote about this strategy](#) being used on the West Coast a few years ago and I'm happy to see it over on the east side of the continent now.

It is still a good idea to physically check sand depth occasionally, but when time is short during the season, whiskers will give you real-time feedback. Bunker renovations are popular right now, and the expectations for playability and presentation are probably as high as we've ever seen. Any tool that can help monitor sand depth without adding additional work is valuable.

Northeast Region Agronomists:

Darin Bevard, senior director, Championship Agronomy – dbevard@usga.org

Elliott L. Dowling, regional director, East Region – edowling@usga.org

Brian Gietka, agronomist – bgietka@usga.org



IN THE WAKE OF DEVASTATION ARISES BRIGHTER RECOVERY FOR ONE GAP MEMBER CLUB



Berwick Golf Club lost a total of 320 trees during a severe June 26 storm. For the next six days, 40 to 60 members hauled fallen timber and debris. The golf course reopened in a week, but Berwick is still picking up the agronomic pieces.

On the road to recovery is a new GAP member benefit: the USGA Course Consulting Service. The USGA Course Consulting Service includes a site visit from an expert agronomist. Brian Gietka serves as consulting agronomist for the USGA Mid-Atlantic Region, which includes GAP. Gietka works in concert with Jeff Kinney, Senior Director of Sales & Operations for the USGA Green Section.

“When Brian does that visit at Berwick, he will be looking at trees from an agronomic perspective, so looking at turf health and playability of trees and the impact it has on playability of the golf course,” Kinney, 44, of Milford, Mass., said. “While he’s out there, he can also provide additional consulting for the agronomic leadership there beyond just looking at the trees. We’re there to grow golfer satisfaction.”

Through GAP, the upcoming Berwick visit comes at zero cost to the club.

“We’re fortunate in GAP to have so many facilities with courses in pristine conditions with skilled superintendents. The USGA Course Consulting visits allow these superintendents to work with an agronomist (Brian) with a wealth of knowledge that can be used to collaborate on solutions to take conditioning, water usage, and maintenance costs to an improved level,” Steve Latos, GAP Director of Member Services, said.

During a site visit, Gietka examines components such as infrastructure, putting greens and tees. “Where can we grow from here?” is the resounding query. The club receives a detailed report that provides answers.

The timing for a USGA Course Consulting visit is divine intervention for Berwick.

Following the June 26 storm, Berwick member Scott Scheirer connected with GAP Executive Committee member Larry McClure. A conversation set the course consulting wheels in motion.

“For GAP to pull the strings to make this happen at no cost to the club ... it’s an incredible opportunity. We’re humbled and gracious for it,” Berwick President Tom Cicini, 40, of Berwick, Pa., said. “Our course was decimated. Our course needed something like this. For us to get [a USGA Course Consulting visit] with the assistance of GAP is incredible. It’s something we won’t soon forget. We’re very thrilled at the opportunity.”

The USGA Course Consulting Service is supported by the Philadelphia Association of Golf Course Superintendents.

If your club is interested a USGA Course Consulting visit, contact Jackson Beers, GAP Director of Membership Growth, at 610-687-2340 ext. 0038 or via email at jbeers@gapgolf.org.

envu™ Golf

Built on a 50-year legacy of environmental excellence

Learn More →



Conquer Heat with INFINITE
Fortified with Diuturon and Protected with Templar



Infinite™ is the first soil surfactant that includes multiple ingredients, designed to manage both soil moisture, plant stress and recovery. A multiple polymer product, fortified with two novel technologies; Diuturon and Templar. Patent pending Diuturon polymer technology, improves the longevity and residual of the product in the soil. Diuturon allows lower use rates. Infinite

also includes Templar, which reduces stress associated from heat and drought through enhancing the plants' natural defense mechanisms. The combination of reduced hydration stress and improved turf defense makes Infinite's performance endless.



Contact us to learn more | info@target-specialty.com
target-specialty.com/gjb | [f](#) [t](#) [in](#) [c](#) [@](#)



GOLF COURSE IRRIGATION WITH LOCAL SUPPORT

Count on Toro and Turf Equipment and Supply Company for innovative products, services, and local support to keep your golf course operation running smoothly.

TURF EQUIPMENT AND SUPPLY
www.turf-equipment.com
800-827-3711

OUR RESEARCH GUARANTEES YOUR CONTROL

Supported by leading products and 10+ years of research, WeevilTrakSM now guarantees control of annual bluegrass weevils, white grubs and turf caterpillars.



92% of WeevilTrak subscribers said they time their applications closely to WeevilTrak recommendations.

88% were satisfied with their level of control in 2021.*

ABW ASSURANCE IN 3 STEPS

- 1 Register at WeevilTrak.com
- 2 Follow course(s) near you
- 3 Download and follow the ABW assurance program sheet



Facebook, Twitter, YouTube icons followed by @SyngentaTurf #WeevilTrak

*Survey of 258 golf course superintendents conducted via TechTrends in Sept. 2021.
© 2023 Syngenta. Important: Always read and follow label instructions. Some products may not be registered for sale or use in all states or countries. Please check with your state or local Extension Service to ensure registration status. ScimitarSM GC is a Restricted Use Pesticide. AceleprynSM, FerenccSM, ProvauntSM, ScimitarSM, WeevilTrakSM, the Alliance name, the Purpose logo and the Syngenta logo are Trademarks or service marks of a Syngenta Group Company. All other trademarks are the property of their respective owners.

Nutrien Solutions



Thank you to all of our industry partners who support Nutrien, looking forward to a prosperous 2024.

BOB BURD
Robert.Burd@nutrien.com

RYAN DAVIDHEISER
Ryan.Davidheiser@nutrien.com

LEADING THE FIELD

©2023 Nutrien Ag Solutions, Inc. All Rights Reserved. All of the trademarks and service marks displayed are marks of their respective owners 9454_K2323



GOLF COURSE SOLUTIONS WITH LOCAL SUPPORT

Count on Toro and Turf Equipment and Supply Company for innovative products, services, and local support to keep your golf course operation running smoothly.

TURF EQUIPMENT AND SUPPLY
www.turf-equipment.com
800-827-3711

SHREINER



TREE CARE

SERVING THE PAGCS FOR OVER 25 YEARS

SERVICES

- Emergency Clean Up
- Tree Pruning
- Tree Removal
- Tree & Shrub Plant Health Care
- Lightening Tree Protection
- Dump Site Clean Out
- Sunlight and Shade Analysis
- Tree Safety Assessments
- Tree Inventory and Mapping
- Invasive Vegetation Removal
- Specimen and Privacy Tree Planting
- Native Woodland Restoration

LET'S GET STARTED!



MIKE KACHURAK

ISA Certified Arborist PD 2739A

ISA Tree Risk Assessment Qualified

Mobile: 570-262-3612 **CALL OR TEXT**

Email: mikek@shreinertreecare.com

SCAN FOR



APPOINTMENT

Let's Grow PAGCS!



Liquid Fertilizers | Micronutrients | Biostimulants | Wetting Agents | Soil Amendments | Pigments
Application Service | Bulk Delivery | Soil Analysis | Research & Consulting



American Manufacturer of Liquid Fertilizers and Plant Health Solutions for the Green Industry.
Established in 1946 | Cranbury, New Jersey

Let's Grow Together!

Mike Janzer | (215) 280-6252
Rich Sweeney, CGCS | (609) 580-0402

www.plantfoodco.com

@PlantFoodCo  

800-562-1291



Check This Out!

EXCLUSIVELY AT  **SiteOne**
LANDSCAPE SUPPLY



**DO MORE
WITH
LESCO®**

In 2022, LESCO is celebrating its 60th year of bringing innovative solutions to the green industry. LESCO – helping pros Do MORE since 1962.

Explore our solutions for professionals at SiteOne.com/Lesco



Healthy playing surfaces,
**PROTECTED
ECOSYSTEMS
AND IMPROVED
water quality**
isn't environmentalism.

IT'S THE FUTURE.
Learn more at branchcreekgolf.com

 |  SynaTek® |  |  EcoTronics
Solutions today, and for what's to come.

JACOBSEN®

Jacobsen Eclipse 360 Elite



Jacobsen AR530 Mower



Smithco

Smithco Electric Bunker Rake



Smithco 1200 Sprayer



EVERYTHING TURF!

Lawn and Golf

More Than the Logo! **supply co. inc.**

Equipment, Parts & Service for Residential, Commercial, Golf, Athletic & Snow Removal Industries.

www.lawn-golf.com P: 610.933.5801 647 Nutt Rd. Phoenixville, PA 19460

INNOVATIVE FERTILIZER

derived from plant-based protein

An innovative fertilizer derived from plant-based protein hydrolysate. This plant-derived fertilizer is rapidly absorbed by leaves, shoots, and roots then translocated throughout the plant. Amino Pro V promotes abiotic stress tolerance, stimulates photosynthesis and promotes increased root mass. Are you ready to add Amino Pro V to your balanced agronomic program? For more information, visit www.harrells.com.



Give Eric a Call Today!

ERIC SHILLING
 eshilling@harrells.com
 (267) 784-4407



www.harrells.com | 800.282.8007



Specializing in high quality grasses for golf courses.

- Tall Fescue
- Fine Fescue
- Bluegrass
- Bentgrass

84 Route 77
 Elmer, NJ 08318
 856-358-4763
 CoombsFarms.com

Kevin Coombs 856-542-4178



**NEXT BONNIE NEWSLETTER DEADLINE
OCTOBER 15**

**PLEASE SUBMIT CONTENT TO:
KLIBSCH@PAGCS.ORG**

YOUR FULL-SERVICE TURF MANAGEMENT PARTNER



Helena is your full-service turf management partner and offers a wide range of innovative products, course mapping and nutrient analysis.

To achieve the quality you desire, contact your local Helena representative or visit HelenaProfessional.com.

Conor Geisel
Sales Representative
609-980-9355



People...Products...Knowledge..

Important: Always read and follow label instructions. Some products may not be registered for sale or use in all states and counties. Please check with your Helena representative to ensure registration status. Helena and People... Products... Knowledge... are registered trademarks of Helena Holding Company.
© 2022 Helena Holding Company. HPG0422P



GEORGE E. LEY COMPANY Golf course Construction, Renovation, and Irrigation

610-942-3809 • GOLFINFO@GELCOGOLF.COM



gelcogolf.com



Arader

TREE SERVICE

Pat Hartman
Certified Arborist
PAGCS Member
pat@aradertree.com
610-637-8299



Our Services include:

- Tree removal and pruning to improve air flow & sunlight
- Cabling & lightning protection systems
- Tree preservation
- Dutch Elm Disease and Bacterial leaf scorch treatment
- Extensive matting systems to protect turf
- A heads up approach to difficult access situations
- Timely response to all inquiries



BECAUSE
GREAT-LOOKING
TURF ONLY TOUCHES
THE SURFACE.

For over 5 generations, Fisher & Son has continued to deliver the highest-quality agronomic solutions to the green industry. With a passion and expertise in all facets of sports turf, landscape, and horticulture management, you will always know the Fisher team has you covered.

Count on the Mid-Atlantic's
Green Industry Innovators.
800.262.2127 | FisherandSon.com



>> PLEASE SUPPORT THOSE WHO SUPPORT US!

PLATINUM

[Pocono Turf](#)
[Turf Equipment](#)
[Plantfood](#)

[Shreiner Tree Care](#)
[Synatek](#)

GOLD

[Arader Tree Service](#)
[Genesis](#)
[Harrell's](#)
[Lebanon Turf](#)
[Lawn & Golf](#)

[Aquatrols](#)
[Ewing Irrigation](#)
[Fisher & Son](#)
[Noble Turf](#)

SILVER

[ENVU](#)
[Mitchell Products](#)
[Aer-Core](#)
[BASF](#)
[John B Ward](#)
[NuFarm](#)
[Total Turf Golf Services](#)
[George E. Ley Company](#)
[SiteOne](#)

[Target Specialty Products](#)
[Helena](#)
[Grass Roots](#)
[Coombs Sod](#)
[Nutrien](#)
[Turf Trade](#)
[Davisson Golf](#)
[Syngenta](#)

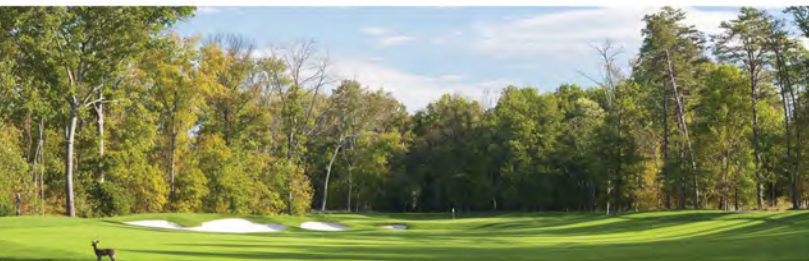
BRONZE

[Finch Turf](#)
[Windview Athletics](#)
[Double D Turf](#)
[Dryject](#)
[East Coast Sod](#)
[PBI Gordon](#)
[FMC](#)

[Corteva](#)
[KM Golf Sales](#)
[Central Sod](#)
[First Turf and Ornamental](#)
[American Golf Grading](#)
[Sox Erosion](#)



2024
PATRIOT
GOLF CLASSIC
 BENEFITING
FOLDS OF HONOR



OCT 15 2024



FOLDS OF HONOR

ABOUT FOLDS OF HONOR

Folds of Honor helps provide scholarships to spouses and children of fallen and disabled service members and first responders.

ABOUT THE CROSSVINES

Created by the vision of Montgomery County Revenue Authority, The Crossvines is a stunning, newly constructed facility that includes an artisan bistro, event space, winery production and research facility, and championship golf course.

TOURNAMENT SCHEDULE

- 10:00 - 11:15 am: *Registration and brunch*
- 11:30 pm: *Shotgun start for scramble*
- 4:00 pm: *Contests and cocktail hour*
- 5:00 pm: *Dinner*
- 5:45 pm: *Awards, Raffles, and Folds of Honor Presentation*



ONE TEAM, MANY CAUSES FOUNDATION is the entity supporting the many charitable causes of Turf Equipment and Supply Company and Storr Tractor Company. Turf Equipment and Storr Tractor believe they share a responsibility to give back and make a positive difference in the various causes that are important to their employees, customers, and turf industry professionals. One Team, Many Causes is currently seeking 501(c)(3) status and has submitted its completed Form 1023 to the IRS. Upon receipt of the IRS ruling letter, our 501(c)(3) tax exempt status is anticipated to be retroactive to August 1, 2024.